



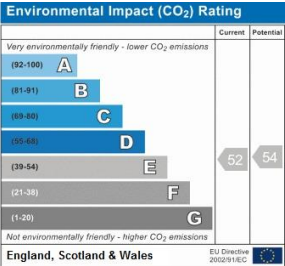
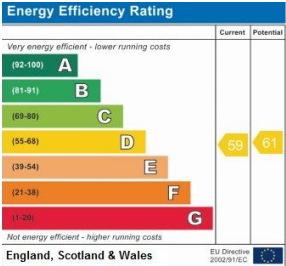
12 Wingmore Road | London | SE24
OAS

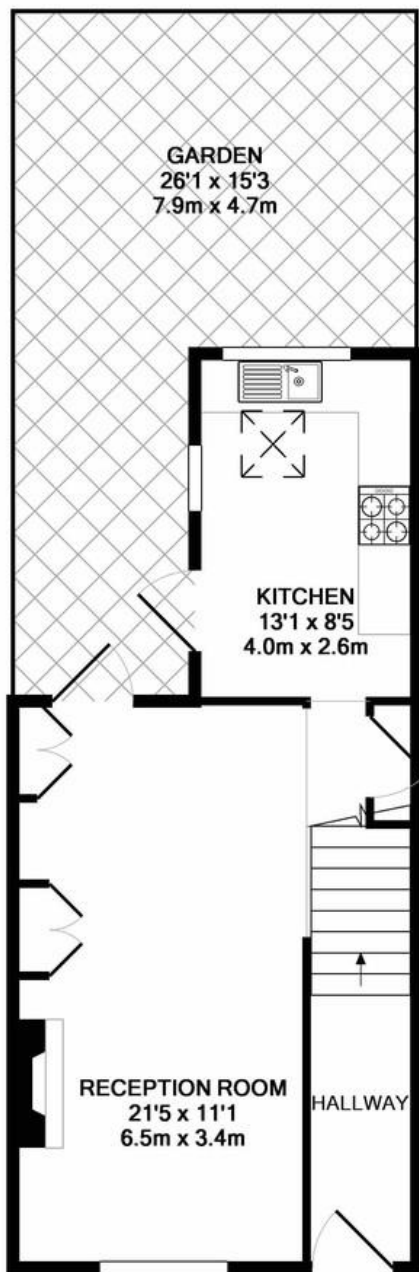
£2,700 pcm

- Victorian terrace house
- Three storeys
- Three double bedrooms
- Pretty rear garden
- Two bathrooms
- Excellent condition
- Excellent transport links
- Brixton & Loughborough Junction
- Denmark Hill
- Kings College Hospital

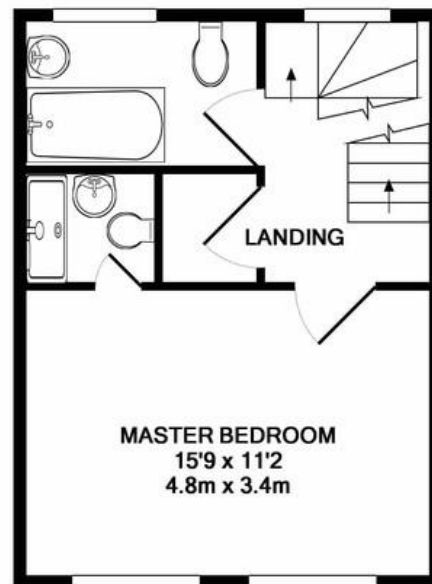


Urban Village. A beautifully presented mid terrace Victorian Townhouse. Located within walking distance of Brixton tube, Loughborough Junction and Denmark Hill Stations. Arranged over three floors with a pretty rear garden. There are three double bedrooms and two bathrooms. Open plan light and spacious reception room, modern and well presented kitchen. The house is offered for a long term, furnished let. Available from 30th July 2019

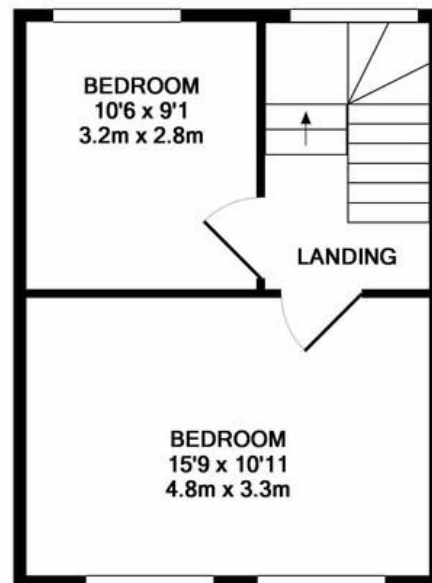




GROUND FLOOR
APPROX. FLOOR
AREA 437 SQ.FT.
(40.6 SQ.M.)



1ST FLOOR
APPROX. FLOOR
AREA 337 SQ.FT.
(31.3 SQ.M.)



2ND FLOOR
APPROX. FLOOR
AREA 337 SQ.FT.
(31.3 SQ.M.)

TOTAL APPROX. FLOOR AREA 1111 SQ.FT. (103.2 SQ.M.)

Whilst every attempt has been made to ensure the accuracy of the floor plan contained here, measurements of doors, windows, rooms and any other items are approximate and no responsibility is taken for any error, omission, or mis-statement. This plan is for illustrative purposes only and should be used as such by any prospective purchaser. The services, systems and appliances shown have not been tested and no guarantee as to their operability or efficiency can be given

Made with Metropix ©2017