



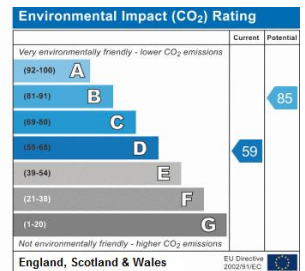
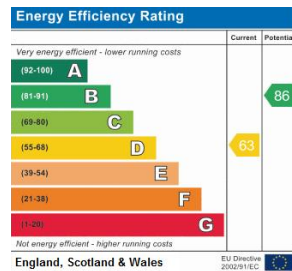
Poplar Road | London | SE24 0BN

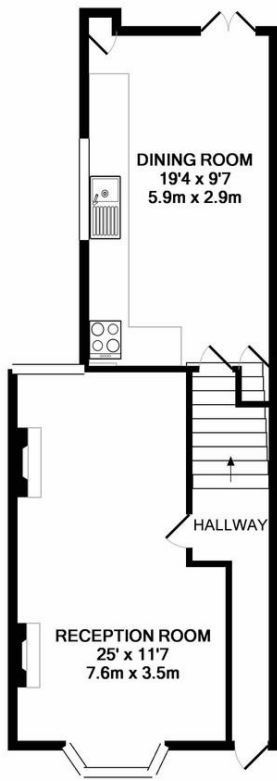
£3,000 pcm

- Large reception room
- Modern Kitchen
- Rear Garden
- Two Bathrooms
- Brixton Tube
- Loughborough Junction
- Denmark Hill
- Herne Hill
- Kings College Hospital
- Professional sharers

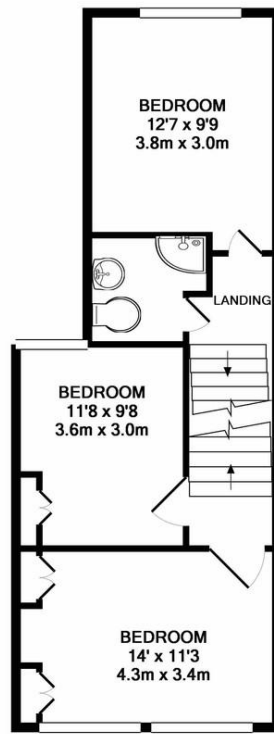


Urban Village. A beautifully presented modern Victorian terrace townhouse. Located within walking distance of Brixton tube, Loughborough Junction, Herne Hill and Denmark Hill Stations. Arranged over three floors with a rear garden that has fruit trees. There are four double bedrooms and two bathrooms. Open plan light and spacious reception room, modern and well presented kitchen. The house is offered for a long term, unfurnished let. Available from 4th November 2017

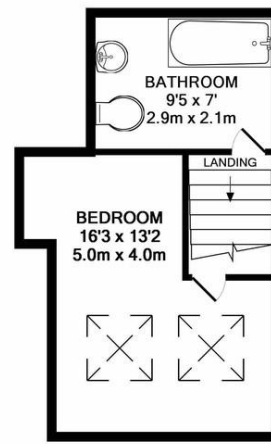




GROUND FLOOR
APPROX. FLOOR
AREA 421 SQ.FT.
(39.1 SQ.M.)



1ST FLOOR
APPROX. FLOOR
AREA 415 SQ.FT.
(38.6 SQ.M.)



2ND FLOOR
APPROX. FLOOR
AREA 237 SQ.FT.
(22.0 SQ.M.)

TOTAL APPROX. FLOOR AREA 1073 SQ.FT. (99.7 SQ.M.)

Whilst every attempt has been made to ensure the accuracy of the floor plan contained here, measurements of doors, windows, rooms and any other items are approximate and no responsibility is taken for any error, omission, or mis-statement. This plan is for illustrative purposes only and should be used as such by any prospective purchaser. The services, systems and appliances shown have not been tested and no guarantee as to their operability or efficiency can be given
Made with Metropix ©2017

Viewing Arrangements

Strictly by appointment

Contact Details

121 Denmark Hill

London

SE5 8EN

www.urbanvillagehomes.co.uk

lettings@urbanvillagehomes.com

020 3519 9121

Agents Note: Whilst every care has been taken to prepare these sales particulars, they are for guidance purposes only. All measurements are approximate and for general guidance purposes only and whilst every care has been taken to ensure their accuracy, they should not be relied upon and potential buyers are advised to recheck the measurements