



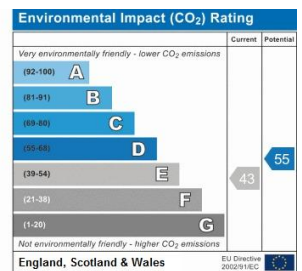
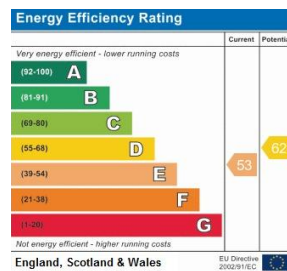
311 Camberwell Road | London | SE5  
OHQ

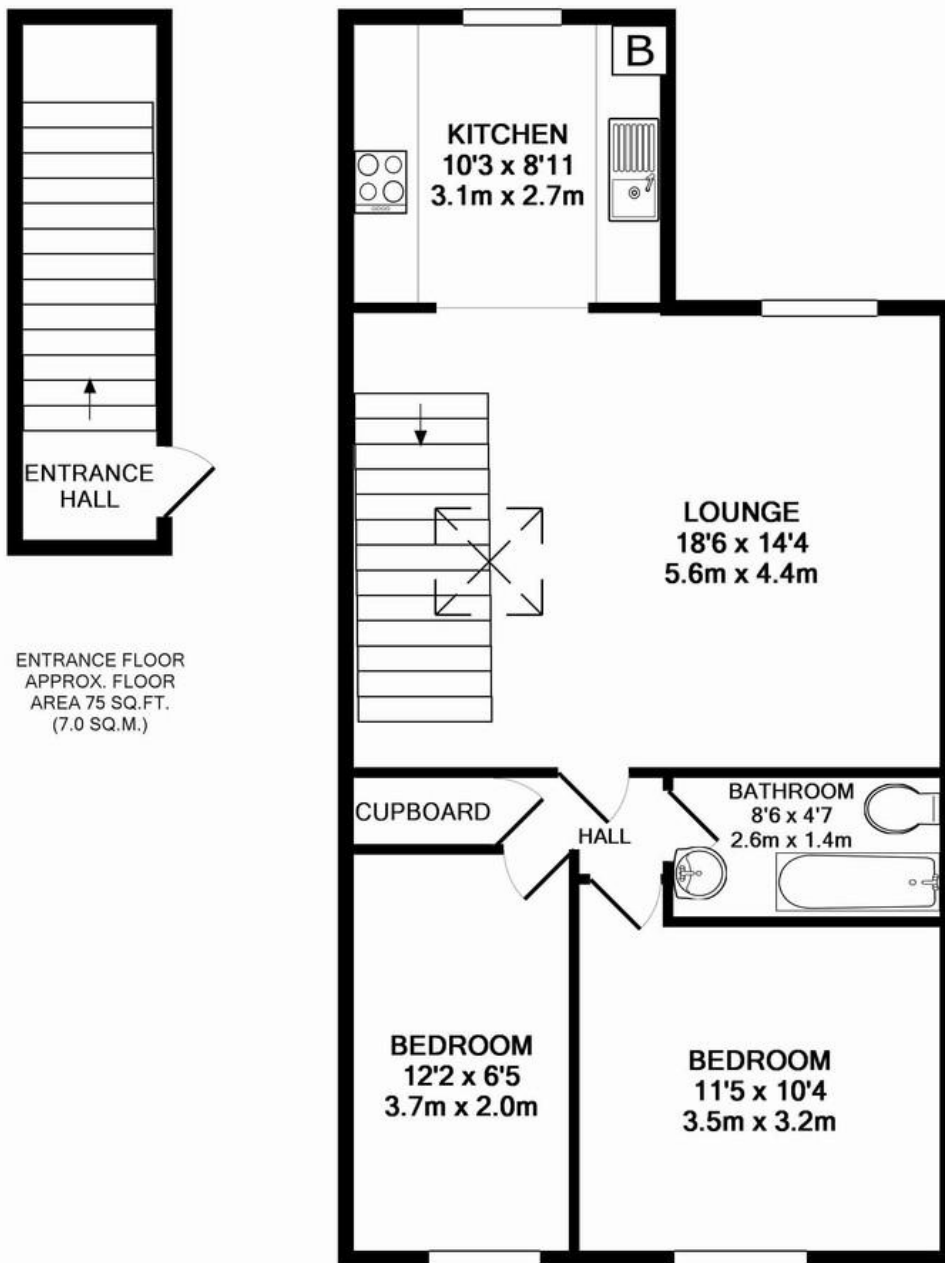
£1,500 pcm

- Top floor apartment
- Victorian conversion
- Two double bedrooms
- Kitchen with dining table
- Large skylight for natural light
- Victorian fireplace
- Close to Kings College hospital
- Denmark Hill Station
- Elephant and Castle
- Camberwell Green



A delightful bright and airy top floor Victorian apartment, in central Camberwell. Two double bedrooms, living room, separate kitchen, with space for a small dining table. Large skylight lets lots of natural light in. A pleasant spacious flat, ideal for a couple or professional sharers. Walking distance to Elephant and Castle, Kennington and Denmark Hill. Very close to Kings College hospital. 04/07/2019 furnished





3RD FLOOR  
APPROX. FLOOR  
AREA 630 SQ.FT.  
(58.6 SQ.M.)

TOTAL APPROX. FLOOR AREA 705 SQ.FT. (65.5 SQ.M.)

Every effort has been made to ensure the accuracy of the floor plan contained here, measurements of rooms and any other items are approximate and no responsibility is taken for any error, omission or mis-statement. This plan is for illustrative purposes only and should be used with as much care as possible. The services, systems and appliances shown have not been tested and no guarantee can be given as to their operability or efficiency.

Made with Metropix ©2016

## Viewing Arrangements

Strictly by appointment

## Contact Details

121 Denmark Hill

London

SE5 8EN

[www.urbanvillagehomes.co.uk](http://www.urbanvillagehomes.co.uk)

[lettings@urbanvillagehomes.com](mailto:lettings@urbanvillagehomes.com)

020 3519 9121

Agents Note: Whilst every care has been taken to prepare these sales particulars, they are for guidance purposes only. All measurements are approximate and are for general guidance purposes only and whilst every care has been taken to ensure their accuracy, they should not be relied upon and potential buyers are advised to recheck the measurements.