



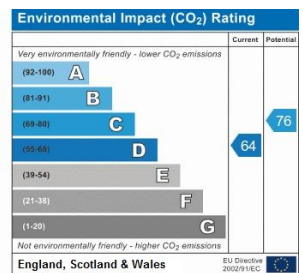
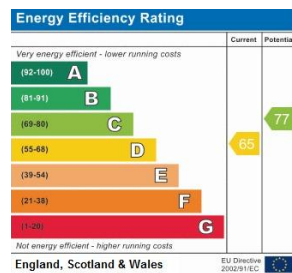
Mallams Mews | London | SW9 7HR

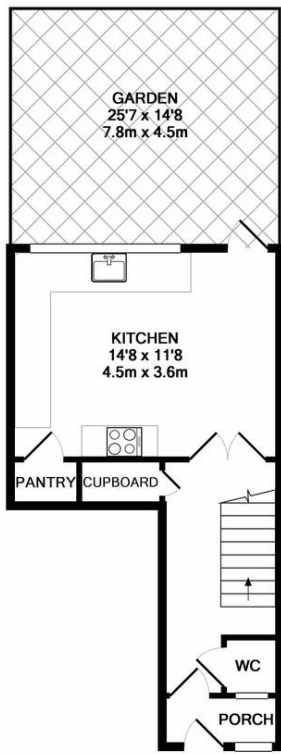
£2,700 pcm

- Three Double Bedrooms
- Downstairs Toilet
- Large Garden
- Bike Storage
- Brixton Tube and Rail
- Denmark Hill
- Loughborough Junction
- Brixton Village
- King's College Hospital
- Part Furnished

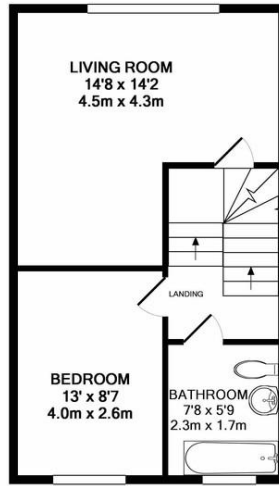


Charming split level three bedroom house within close walking distance of Brixton tube and rail stations, Denmark Hill and Loughborough Junction station. The three double bedrooms are all on separate levels of the house offering excellent privacy for professional sharers and the property has plenty of storage space including a bicycle shed in the large garden. The kitchen, which features a large modern oven, opens out onto a covered deck. There is a modern bathroom as well as a WC, and the house has been decorated and maintained to a high standard. The local area of Brixton is renowned for its nightlife, food and entertainment. From the iconic local clubs like Brixton Electric, to the bustling Brixton village, or the historical Ritzy cinema, there is a bit of everything for everyone.





GROUND FLOOR
APPROX. FLOOR
AREA 299 SQ.FT.
(27.7 SQ.M.)



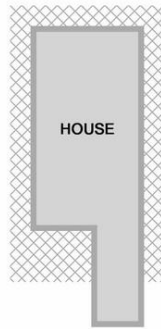
1ST FLOOR
APPROX. FLOOR
AREA 388 SQ.FT.
(36.0 SQ.M.)



2ND FLOOR
APPROX. FLOOR
AREA 388 SQ.FT.
(36.0 SQ.M.)

TOTAL APPROX. FLOOR AREA 1075 SQ.FT. (99.8 SQ.M.)

Whilst every attempt has been made to ensure the accuracy of the floor plan contained here, measurements of doors, windows, rooms and any other items are approximate and no responsibility is taken for any error, omission, or mis-statement. This plan is for illustrative purposes only and should be used as such by any prospective purchaser. The services, systems and appliances shown have not been tested and no guarantee as to their operability or efficiency can be given
Made with Metropix ©2020



SITE PLAN

Viewing Arrangements

Strictly by appointment

Contact Details

121 Denmark Hill

London

SE5 8EN

www.urbanvillagehomes.co.uk

lettings@urbanvillagehomes.com

020 3519 9121

Agents Note: Whilst every care has been taken to prepare these sales particulars, they are for guidance purposes only. All measurements are approximate and for general guidance purposes only and whilst every care has been taken to ensure their accuracy, they should not be relied upon and potential buyers are advised to recheck the measurements