



Ada Road | London | SE5 7RW

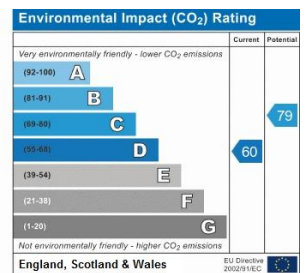
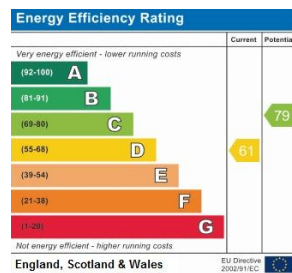
Freehold

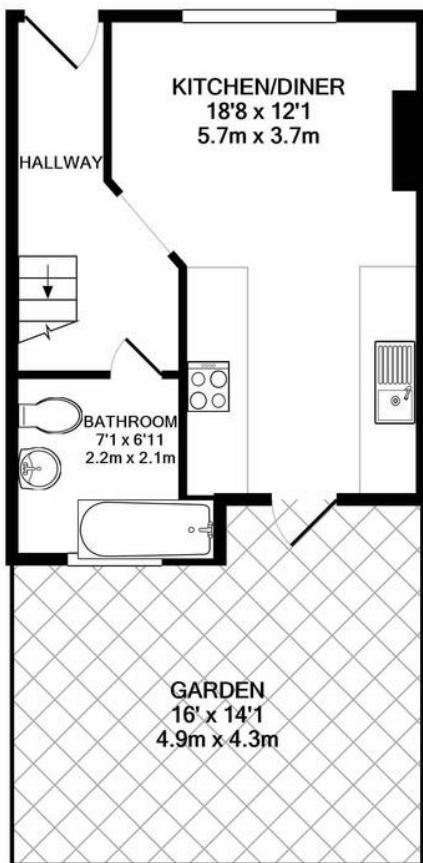
£700,000

- Victorian Cottage
- 3 bedroom
- Garden
- Camberwell
- Loft Conversion
- Peckham Rye Station
- Denmark Hill Station
- Brunswick Park
- Original Victorian Features
- Recently Renovated

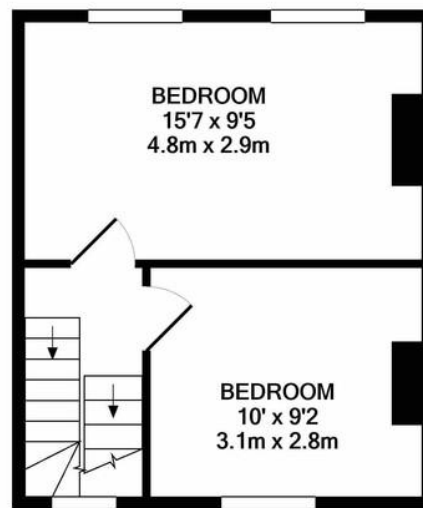


Pretty mid-terrace family home. A recently renovated Victorian cottage with an open plan kitchen diner that leads out to a pretty back garden. The house has two double bedrooms on the first floor and master with en-suite in the loft. Well located in the heart of Camberwell, numerous amenities are with-in walking distance as well as great transport links and schools.

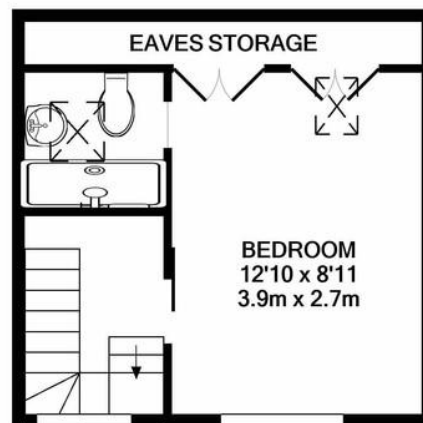




GROUND FLOOR
APPROX. FLOOR
AREA 307 SQ.FT.
(28.5 SQ.M.)



1ST FLOOR
APPROX. FLOOR
AREA 285 SQ.FT.
(26.5 SQ.M.)



2ND FLOOR
APPROX. FLOOR
AREA 245 SQ.FT.
(22.8 SQ.M.)

TOTAL APPROX. FLOOR AREA 837 SQ.FT. (77.8 SQ.M.)

Whilst every attempt has been made to ensure the accuracy of the floor plan contained here, measurements of doors, windows, rooms and any other items are approximate and no responsibility is taken for any error, omission, or mis-statement. This plan is for illustrative purposes only and should be used as such by any prospective purchaser. The services, systems and appliances shown have not been tested and no guarantee as to their operability or efficiency can be given
Made with Metropix ©2020

Viewing Arrangements

Strictly by appointment

Contact Details

121 Denmark Hill

London

SE5 8EN

www.urbanvillagehomes.co.uk

sales@urbanvillagehomes.com

020 3519 9121

Agents Note: Whilst every care has been taken to prepare these sales particulars, they are for guidance purposes only. All measurements are approximate and are for general guidance purposes only and whilst every care has been taken to ensure their accuracy, they should not be relied upon and potential buyers are advised to recheck the measurements