



Champion Hill | London | SE5 8TN

Leasehold

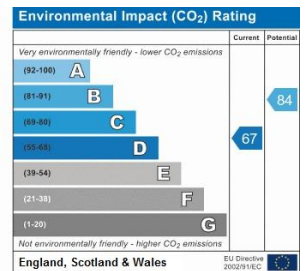
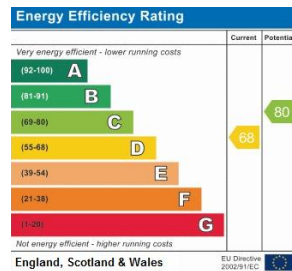
£455,000

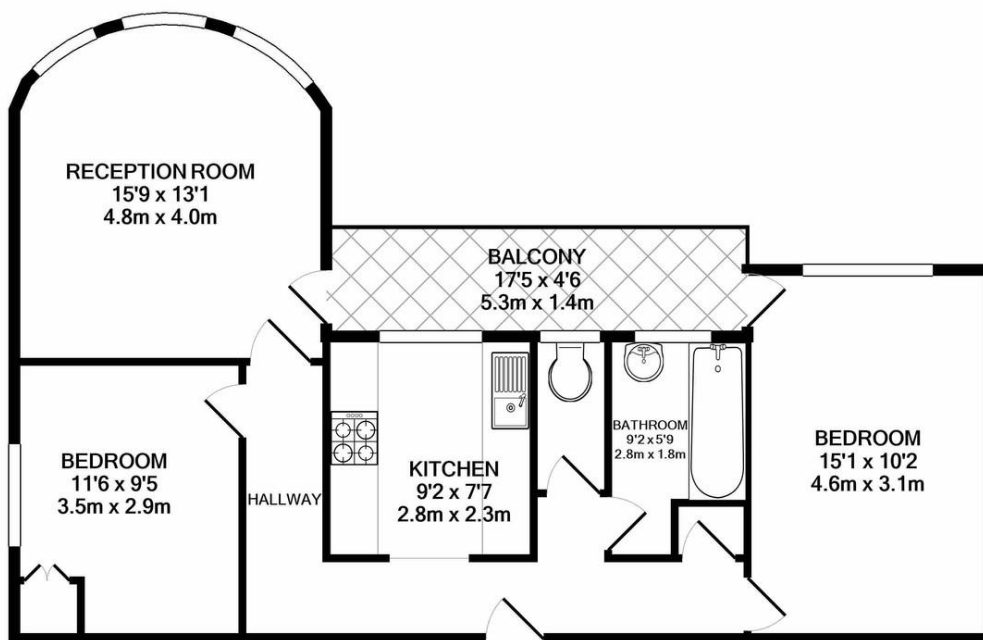
- Ruskin Park House
- Two double bedrooms
- Ground Floor
- Balcony
- Communal Gardens
- Modern Kitchen
- Denmark Hill Station
- East Dulwich Station
- King's College Hospital
- Camberwell



This is a beautiful two bed apartment on the ground floor of Ruskin Park House with a modern kitchen and gorgeous wood flooring throughout. The signature rounded bay window provides a large bright reception room and art-deco charm that Ruskin Park House is famous for. The balcony is accessible from both the main reception room and the master bedroom and looks out over the extremely well maintained communal gardens.

Built in 1954 Ruskin Park House is a desirable collection of purpose built apartments, maintained to a high standard by onsite estate manager and caretakers. Very close to Denmark Hill station, Ruskin Park, Herne Hill and its Village farmers market, Peckham and Brixton with vibrant nightlife are close by. Share in the leasehold management company. Service charge £2,612pa.





TOTAL APPROX. FLOOR AREA 691 SQ.FT. (64.2 SQ.M.)

Whilst every attempt has been made to ensure the accuracy of the floor plan contained here, measurements of doors, windows, rooms and any other items are approximate and no responsibility is taken for any error, omission, or mis-statement. This plan is for illustrative purposes only and should be used as such by any prospective purchaser. The services, systems and appliances shown have not been tested and no guarantee as to their operability or efficiency can be given
 Made with Metropix ©2020

Viewing Arrangements

Strictly by appointment

Contact Details

121 Denmark Hill

London

SE5 8EN

www.urbanvillagehomes.co.uk

sales@urbanvillagehomes.com

020 3519 9121

Agents Note: Whilst every care has been taken to prepare these sales particulars, they are for guidance purposes only. All measurements are approximate and are for general guidance purposes only and whilst every care has been taken to ensure their accuracy, they should not be relied upon and potential buyers are advised to recheck the measurements