

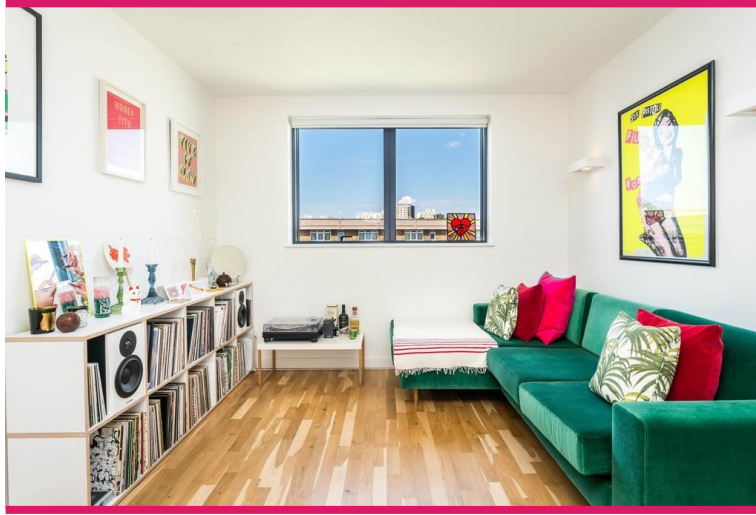


Wynne Road | London | SW9

Leasehold

£345,000

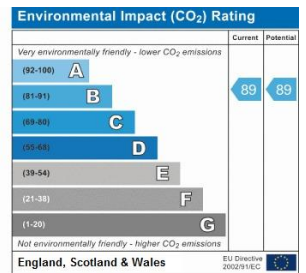
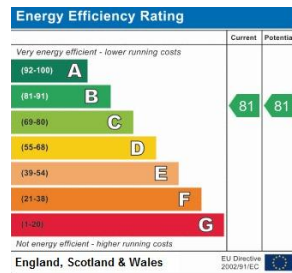
- One double bedroom
- Third floor
- Modern block
- Walk in Shower
- Open plan living space
- Bike Parking
- Communal court yard garden
- Brixton tube / over ground
- Brixton Market
- Local bus routes to central London

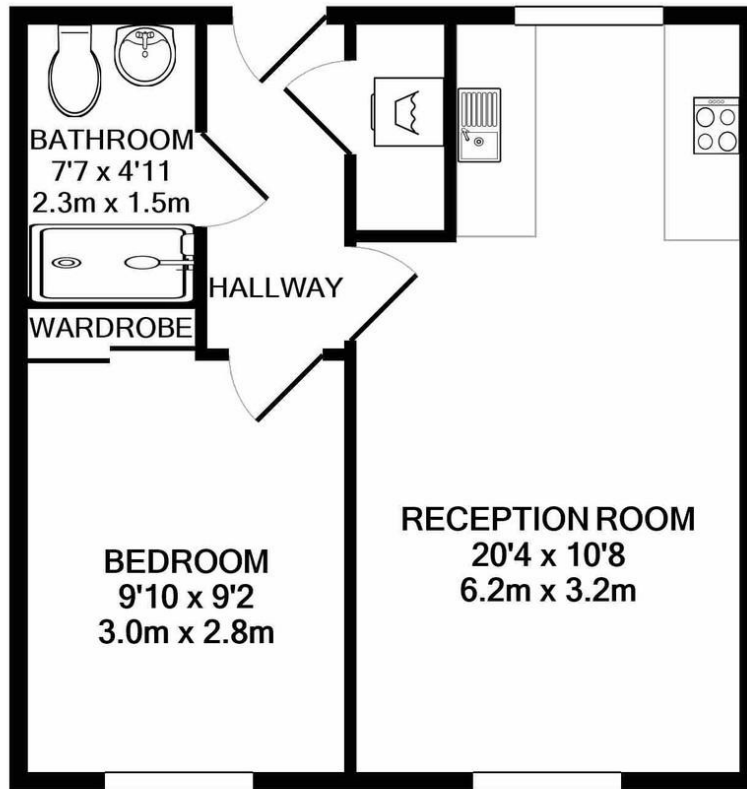


**\*\*First time buyers only \*\* Video tour available\*\***

One bedroom flat located on the third floor of a small, modern development with a secure entry system, bike storage and communal courtyard gardens. Well-designed open plan living space, the property has underfloor heating and double glazing throughout with a modern bathroom with walk-in shower. A large storage cupboard and lots of natural light make this a perfectly positioned starter home for a first time buyer. Built in 2017, it is designed for young professionals looking to get on the property ladder, and currently available only to first-time buyers with a household income of no more than £90K.







**TOTAL APPROX. FLOOR AREA 396 SQ.FT. (36.8 SQ.M.)**

Whilst every attempt has been made to ensure the accuracy of the floor plan contained here, measurements of doors, windows, rooms and any other items are approximate and no responsibility is taken for any error, omission, or mis-statement. This plan is for illustrative purposes only and should be used as such by any prospective purchaser. The services, systems and appliances shown have not been tested and no guarantee as to their operability or efficiency can be given

Made with Metropix ©2020

## Viewing Arrangements

Strictly by appointment

## Contact Details

121 Denmark Hill

London

SE5 8EN

[www.urbanvillagehomes.co.uk](http://www.urbanvillagehomes.co.uk)

[sales@urbanvillagehomes.com](mailto:sales@urbanvillagehomes.com)

020 3519 9121

Agents Note: Whilst every care has been taken to prepare these sales particulars, they are for guidance purposes only. All measurements are approximate and are for general guidance purposes only and whilst every care has been taken to ensure their accuracy, they should not be relied upon and potential buyers are advised to recheck the measurements