



Lyndhurst Way | London | SE15

£3,200 pcm

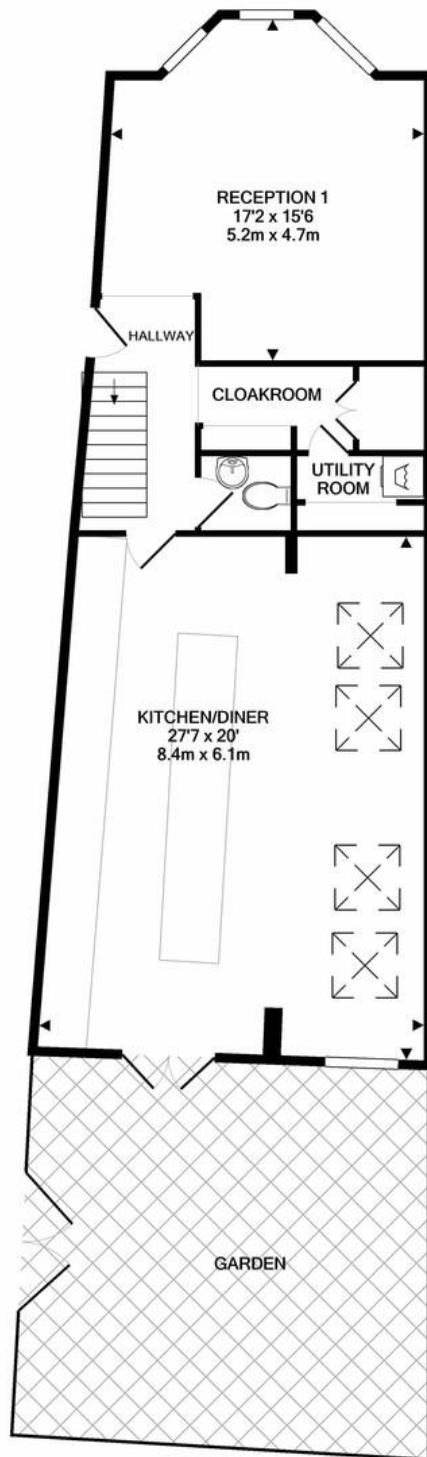
- Three bedrooms
- Large modern kitchen
- High spec
- Large family bathroom
- Excellent storage
- Private garden
- Excellent schools
- Local Amenities
- Good transport links
- Local parks and green spaces



Immaculately presented three bedroom Victorian end of terrace family home. Perfectly situated for the amenities and transport links of Peckham & Bellenden Village. The ground floor is renovated to a high standard, it has an extended kitchen diner with integrated appliances, separate reception room and cloakroom with plenty of clever storage solutions. Upstairs are three ample bedrooms and a family bathroom. The pretty back garden make this a perfect home for a family.



%epcGraph_c_1_300%



1ST FLOOR
APPROX. FLOOR
AREA 655 SQ.FT.
(60.9 SQ.M.)

TOTAL APPROX. FLOOR AREA 1575 SQ.FT. (146.3 SQ.M.)

Whilst every attempt has been made to ensure the accuracy of the floor plan contained here, measurements of doors, windows, rooms and any other items are approximate and no responsibility is taken for any error, omission, or mis-statement. This plan is for illustrative purposes only and should be used as such by any prospective purchaser. The services, systems and appliances shown have not been tested and no guarantee as to their operability or efficiency can be given.
Made with Metropix ©2021

Viewing Arrangements

Strictly by appointment

Contact Details

121 Denmark Hill

London

SE5 8EN

www.urbanvillagehomes.co.uk

lettings@urbanvillagehomes.com

020 3519 9121

FLOOR
FLOOR
AREA 655 SQ.FT.
(60.9 SQ.M.)

Agents Note: Whilst every care has been taken to prepare these sales particulars, they are for guidance purposes only. All measurements are approximate and for general guidance purposes only and whilst every care has been taken to ensure their accuracy, they should not be relied upon and potential buyers are advised to recheck the measurements.