



Asylum Road | London | SE15

Share of Freehold

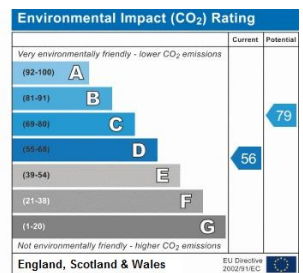
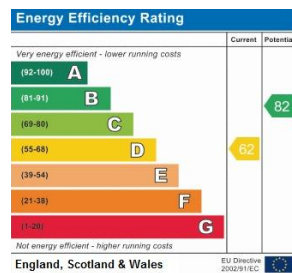
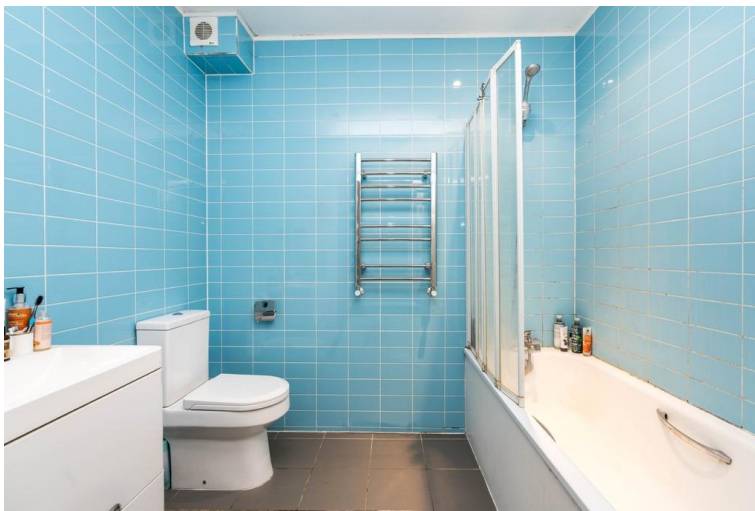
£575,000

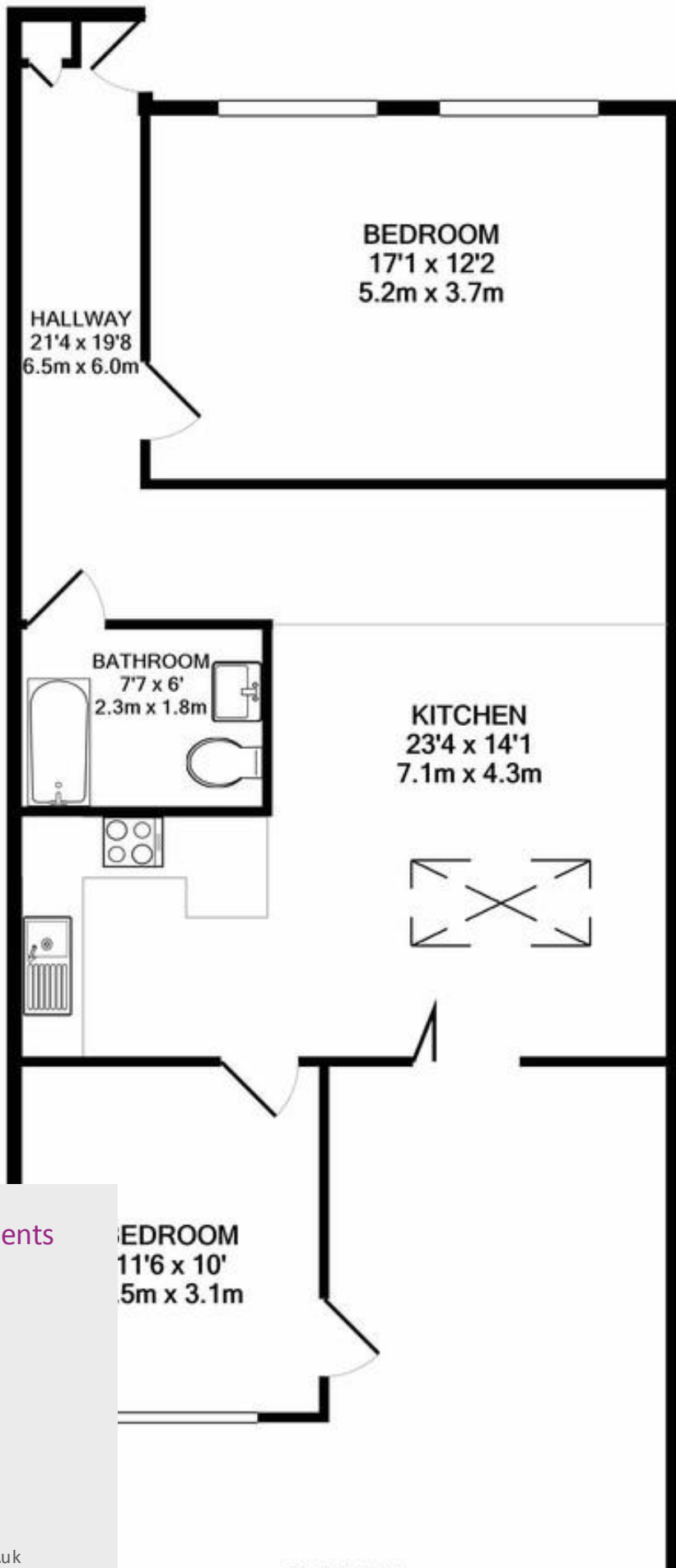
- 2 Double Bedrooms
- Private Garden
- Large Skylight
- Open Plan Living
- Bi folding Doors
- Queens Road Peckham
- Own Frontdoor
- Off Road Parking
- Ground Level Flat
- Share of the freehold



A large light and airy two bedroom Ground floor flat with private garden and an open plan living space. This modern apartment has plenty of inbuilt storage and shelving and features bi-folding doors which open out onto the private garden. The property boasts modern fixtures and fittings with wooden style flooring and new windows throughout. The flat has its own front door as well as off road parking.

The two large double bedrooms have newly fitted windows and inbuilt storage. The main bedroom also features an original fireplace and a desk/study area. The sociable living space includes kitchen, dining and seating area as well as a large skylight. The modern bathroom is tiled throughout and has a shower and bath.





Viewing Arrangements

Strictly by appointment

Contact Details

121 Denmark Hill

London

SE5 8EN

www.urbanvillagehomes.co.uk

sales@urbanvillagehomes.com

020 3519 9121

Agents Note: Whilst every care has been taken to prepare these sales particulars, they are for guidance purposes only. All measurements are approximate and are for general guidance purposes only and whilst every care has been taken to ensure their accuracy, they should not be relied upon and potential buyers are advised to recheck the measurements