



Northway Road | London | SE5 9AN

Freehold

£745,000

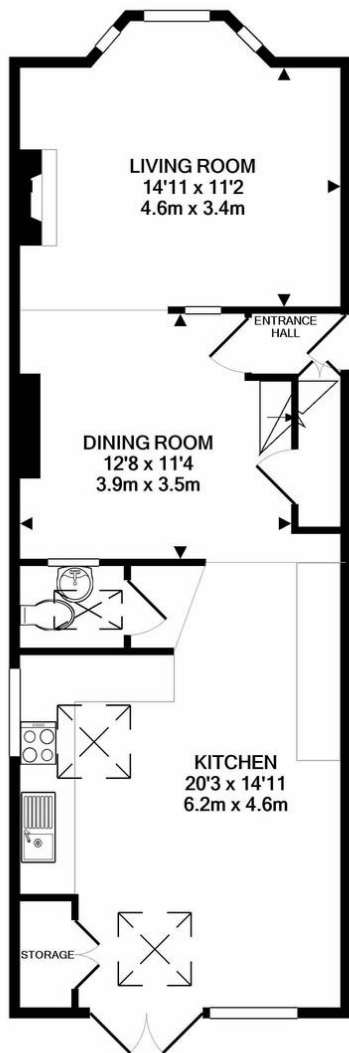
- End of terrace
- Victorian House
- Three bedrooms
- Large kitchen diner
- Period features
- Pretty walled garden
- Loughborough junction station
- Ruskin Park
- Brixton Village
- Excellent transport links



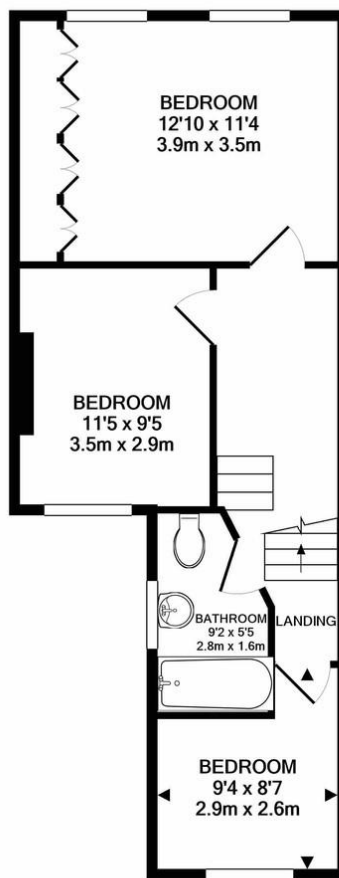
Well presented 3-bedroom end of terrace Victorian home on the popular Northway Road. The house has well - considered spaces, whilst maintaining some period features and plenty of natural light. Three good sized bedrooms, two bathrooms and through lounge with Victorian fireplaces and wooden floorboards. Large modern kitchen diner with folding doors which open out onto the pretty garden. This is a lovely family home with the option for a loft conversion STPP. Northway Road has an entrance to Ruskin Park with its summer bandstand concerts and paddling pool. Walking distance to King's College Hospital, Denmark Hill Station, Loughborough Junction Station, Brixton tube & Herne Hill farmers market.



%epcGraph\_c\_1\_300%



GROUND FLOOR  
APPROX. FLOOR  
AREA 647 SQ.FT.  
(60.1 SQ.M.)



1ST FLOOR  
APPROX. FLOOR  
AREA 466 SQ.FT.  
(43.3 SQ.M.)

TOTAL APPROX. FLOOR AREA 1113 SQ.FT. (103.4 SQ.M.)

Whilst every attempt has been made to ensure the accuracy of the floor plan contained here, measurements of doors, windows, rooms and any other items are approximate and no responsibility is taken for any error, omission, or mis-statement. This plan is for illustrative purposes only and should be used as such by any prospective purchaser. The services, systems and appliances shown have not been tested and no guarantee as to their operability or efficiency can be given  
Made with Metropix ©2020

## Viewing Arrangements

Strictly by appointment

## Contact Details

121 Denmark Hill

London

SE5 8EN

[www.urbanvillagehomes.co.uk](http://www.urbanvillagehomes.co.uk)

[sales@urbanvillagehomes.com](mailto:sales@urbanvillagehomes.com)

020 3519 9121

Agents Note: Whilst every care has been taken to prepare these sales particulars, they are for guidance purposes only. All measurements are approximate and are for general guidance purposes only and whilst every care has been taken to ensure their accuracy, they should not be relied upon and potential buyers are advised to recheck the measurements