



82C Herne Hill Road | London | SE24
OAN

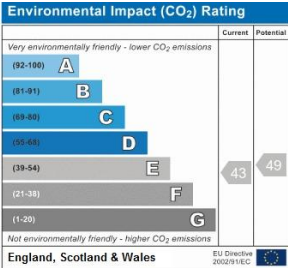
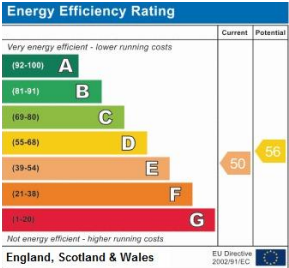
%tenure%

£1,450 pcm

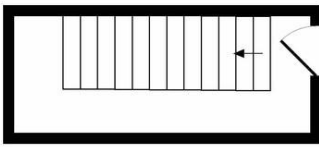
- Top floor Victorian conversion
- One double bedroom
- Well presented
- Exposed brick fireplace detail
- Lots of natural light
- Furnished
- Available 31st may
- Excellent transport
- Ruskin Park
- Kings College Hospital



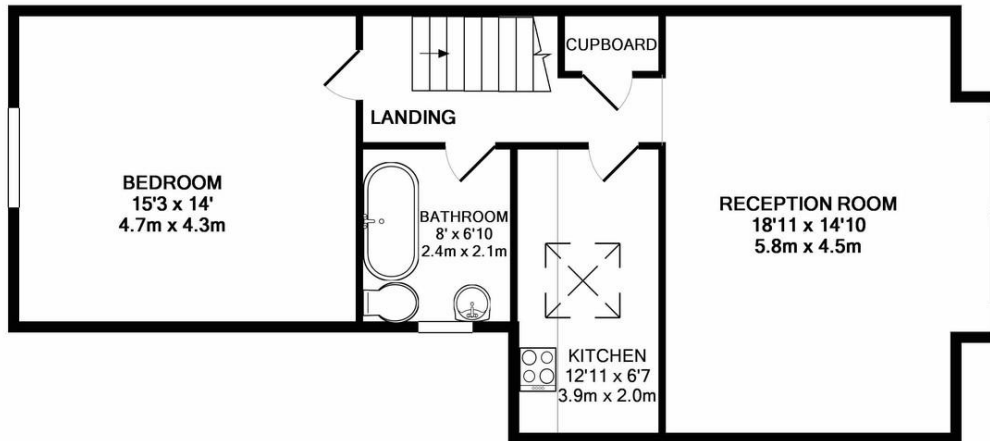
Bright and stylish top floor Victorian conversion apartment. One double bedroom, large lounge and pretty kitchen. has a spacious feel and is ideal for a single or couple. Located within walking distance of Loughborough junction rail station (Blackfriars, St. Pancras) Brixton tube, is some 15 min on foot, Ruskin Park, Denmark Hill station (Victoria) Herne Hill Farmers market, Brockwell Lido and brand new local Gym 2 roads up. Offered furnished from 31st May.



Whilst every attempt has been made to ensure the accuracy of the floor plan contained here, measurements of doors, windows, rooms and any other items are approximate and no responsibility is taken for any error, omission, or mis-statement. This plan is for illustrative purposes only and should be used as such by any prospective purchaser. The services, systems and appliances shown have not been tested and no guarantee as to their operability or efficiency can be given
Made with Metropix ©2019



ENTRANCE FLOOR
APPROX. FLOOR
AREA 77 SQ.FT.
(7.1 SQ.M.)



GROUND FLOOR
APPROX. FLOOR
AREA 698 SQ.FT.
(64.9 SQ.M.)

Viewing Arrangements

Strictly by appointment

Contact Details

121 Denmark Hill

London

SE5 8EN

www.urbanvillagehomes.co.uk

lettings@urbanvillagehomes.com

020 3519 9121

Agents Note: Whilst every care has been taken to prepare these sales particulars, they are for guidance purposes only. All measurements are approximate are for general guidance purposes only and whilst every care has been taken to ensure their accuracy, they should not be relied upon and potential buyers are advised to recheck the measurements