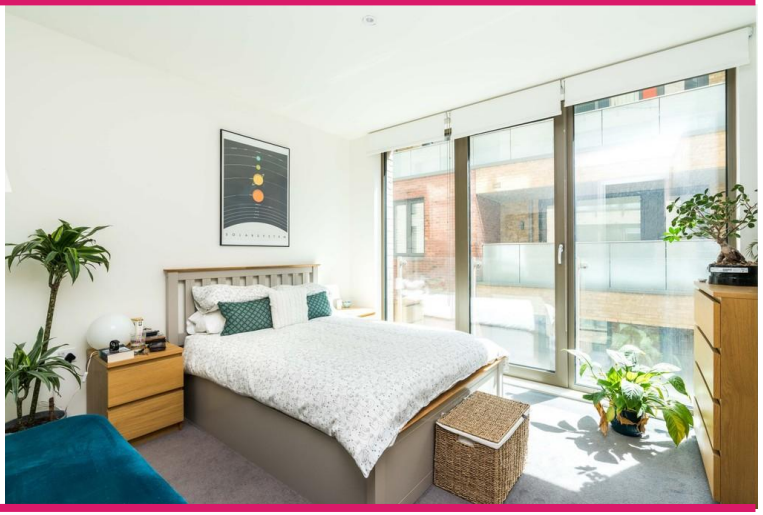




Camberwell Passage | London | SE5

£1,600 pcm

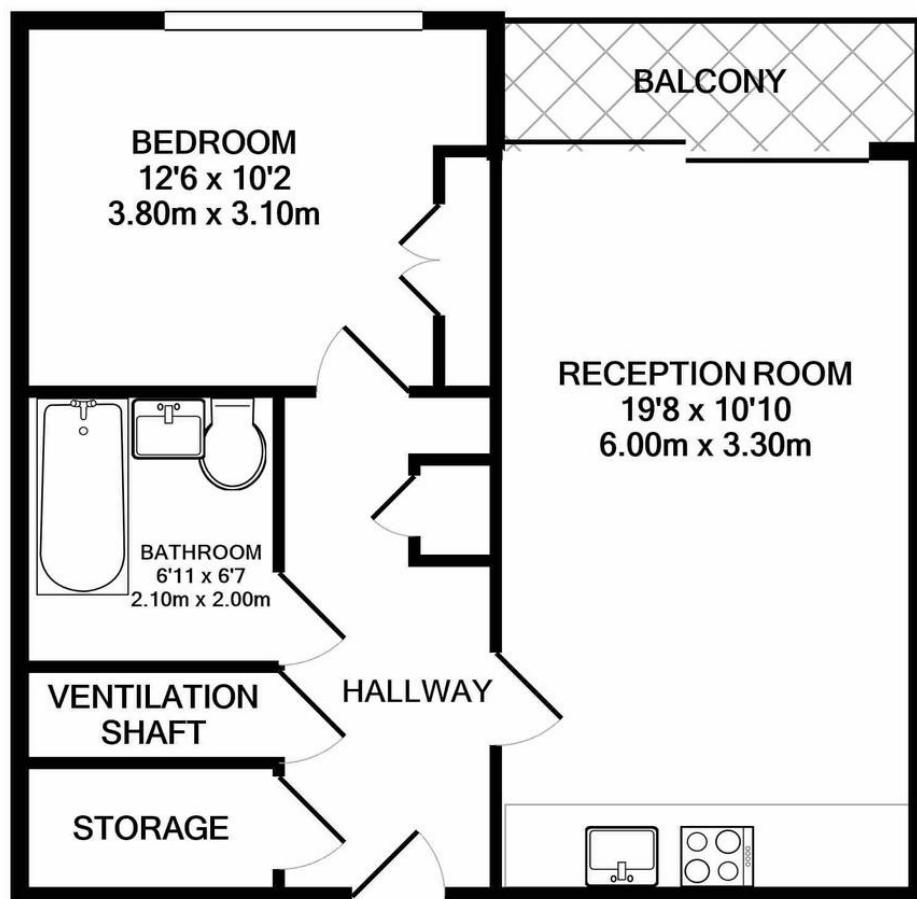
- One Bedroom
- High Spec
- Private balcony
- Large bathroom
- Lots of storage
- Secure entry
- Camberwell
- Excellent bus routes
- Denmark Hill
- Kings College Hospital



Beautifully presented second floor one bedroom flat in a sought after modern development. The Open plan kitchen/reception room is spacious, has quality integrated appliances and is a perfect rental for high earning professionals. The apartment has large storage cupboards, a spacious private balcony, and a two-step secure phone entry system. Conveniently located within walking distance to Camberwell's array of shops, boutiques, restaurants and the vibrant East Street market. Transport links are excellent with buses to the City and West End from the adjacent Camberwell Road and Camberwell New Road. Oval, Kennington and Elephant & Castle tube stations are nearby, and Denmark Hill and Loughborough Junction train stations are a stone's throw away.



Energy Efficiency Rating		
	Current	Potential
Very energy efficient - lower running costs		
(92-100) A		
(81-91) B	86	86
(69-80) C		
(55-68) D		
(39-54) E		
(21-38) F		
(1-20) G		
Not energy efficient - higher running costs		



TOTAL APPROX. FLOOR AREA 517 SQ.FT. (48.1 SQ.M.)

Whilst every attempt has been made to ensure the accuracy of the floor plan contained here, measurements of doors, windows, rooms and any other items are approximate and no responsibility is taken for any error, omission, or mis-statement. This plan is for illustrative purposes only and should be used as such by any prospective purchaser. The services, systems and appliances shown have not been tested and no guarantee as to their operability or efficiency can be given

Made with Metropix ©2022

Viewing Arrangements

Strictly by appointment

Contact Details

121 Denmark Hill

London

SE5 8EN

www.urbanvillagehomes.co.uk

lettings@urbanvillagehomes.com

020 3519 9121

Agents Note: Whilst every care has been taken to prepare these sales particulars, they are for guidance purposes only. All measurements are approximate are for general guidance purposes only and whilst every care has been taken to ensure their accuracy, they should not be relied upon and potential buyers are advised to recheck the measurements