



Talma Road | London | SW2

Freehold

£1,350,000

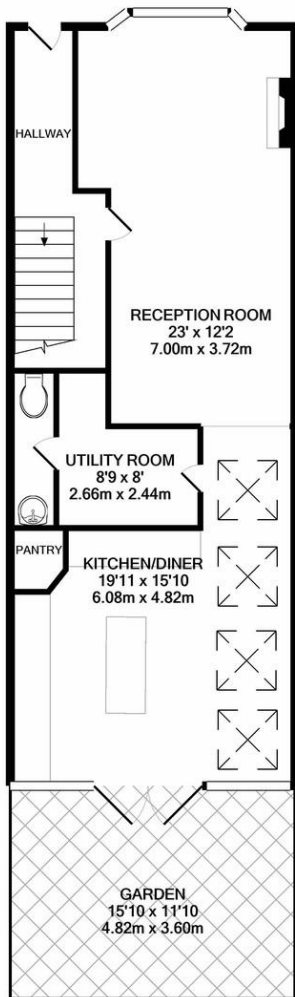
- Recently renovated
- Four bedroom
- Three bathroom
- Utility room with WC
- Private south facing garden
- Built in gas bbq
- Brixton Market
- Brixton Tube
- Brixton Pop
- Brockwell Park



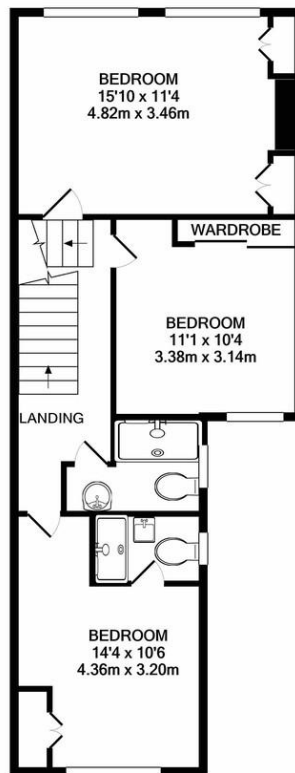
End of terrace Victorian house on an attractive, quiet road in the heart of Brixton. Recently extended and refurbished to a very high standard. The ground floor comprises of, reception room with large bay window and fireplace, a beautiful kitchen/diner filled with natural light and separate utility room / WC. Four double bedrooms split across the first and second floors, two of which have ensuites and a family bathroom. Brixton, is a dynamic, unique, cosmopolitan area. Zone two on the Victoria line of the London Underground, Brixton boasts fantastic transport links and offers a perfect base with direct trains to Pimlico, Victoria, Green Park and Oxford Circus. Brixton Market, shops, restaurants and Brixton POP. A stones throw from Heme hill, Brockwell park and the overground.



%epcGraph_c_1_300%



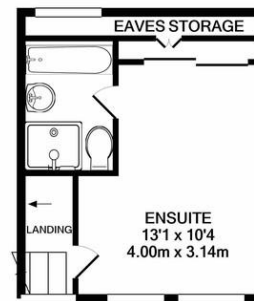
GROUND FLOOR
APPROX. FLOOR
AREA 671 SQ.FT.
(62.4 SQ.M.)



1ST FLOOR
APPROX. FLOOR
AREA 556 SQ.FT.
(51.7 SQ.M.)

TOTAL APPROX. FLOOR AREA 1439 SQ.FT. (133.7 SQ.M.)

Whilst every attempt has been made to ensure the accuracy of the floor plan contained here, measurements of doors, windows, rooms and any other items are approximate and no responsibility is taken for any error, omission, or mis-statement. This plan is for illustrative purposes only and should be used as such by any prospective purchaser. The services, systems and appliances shown have not been tested and no guarantee as to their operability or efficiency can be given
Made with Metropix ©2022



2ND FLOOR
APPROX. FLOOR
AREA 212 SQ.FT.
(19.7 SQ.M.)

Viewing Arrangements

Strictly by appointment

Contact Details

121 Denmark Hill

London

SE5 8EN

www.urbanvillagehomes.co.uk

sales@urbanvillagehomes.com

020 3519 9121

Agents Note: Whilst every care has been taken to prepare these sales particulars, they are for guidance purposes only. All measurements are approximate and for general guidance purposes only and whilst every care has been taken to ensure their accuracy, they should not be relied upon and potential buyers are advised to recheck the measurements