



Benhill Road | London | SE5

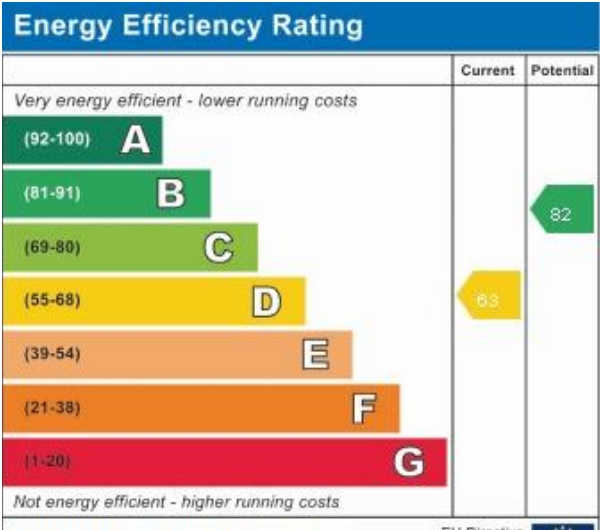
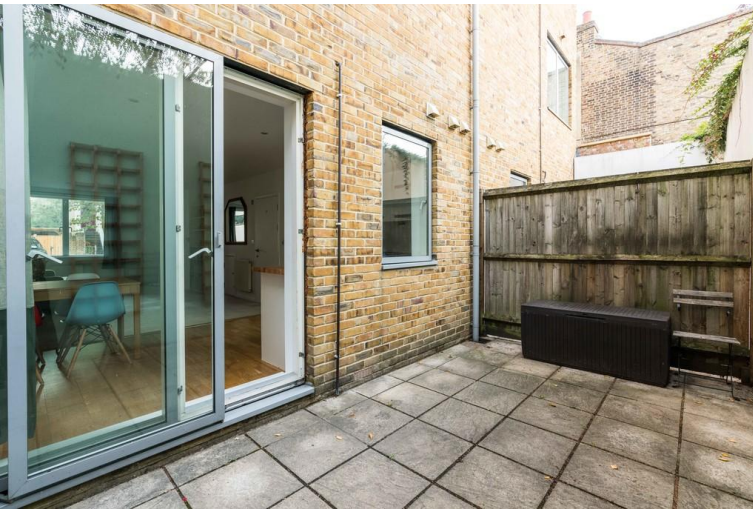
£2,100 pcm

- Split level flat
- 2 Double Bedrooms
- Open Plan Kitchen/Living
- Private Terrace
- Own Entrance
- Camberwell
- Oval
- Peckham
- Excellent bus routes
- Green Spaces

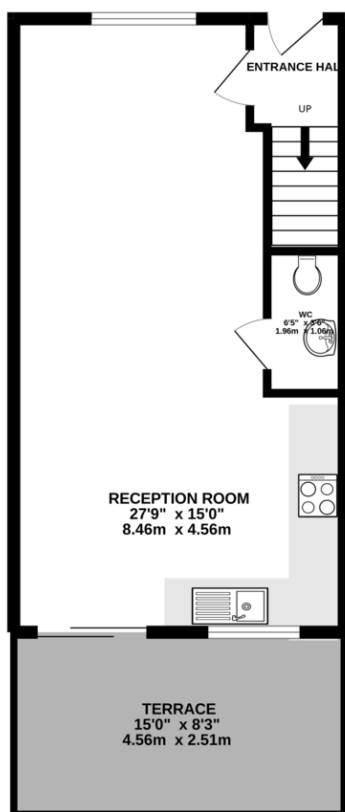


COUPLE OR FAMILY. A fabulous modern split level flat , with own front door and private terrace. there is a spacious open plan kitchen and living space with sliding doors out the terrace and dual aspect windows. There is also a WC under the stairs. Upstairs there are two large double bedrooms and a spacious family bathroom. In the popular area of Camberwell there a numerous green spaces, critically acclaimed restaurants and an excellent selection of bars, pubs and cafes. Travel connections are plentiful; source TFL.co.uk London Bridge - 21 minutes, Canary Wharf - 21 minutes, Shoreditch High Street - 25 minutes, Oxford Circus - 23 minutes Waterloo - 24 minutes Bank - 28 minutes Covent Garden - 35 minutes. NOT SUITABLE FOR SHARERS. available November. Furnished as seen.

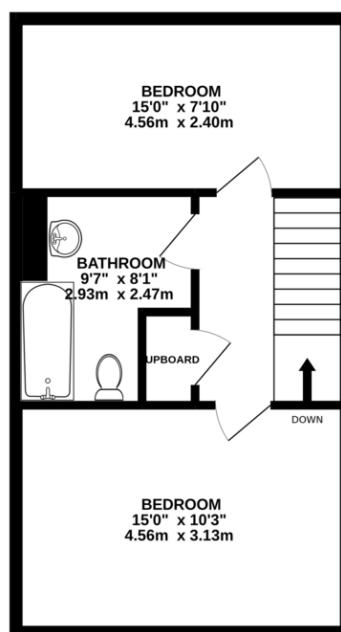




GROUND FLOOR  
416 sq.ft. (38.6 sq.m.) approx.



1ST FLOOR  
411 sq.ft. (38.2 sq.m.) approx.



TOTAL FLOOR AREA : 827 sq.ft. (76.8 sq.m.) approx.

Whilst every attempt has been made to ensure the accuracy of the floorplan contained herein, measurements of doors, windows, rooms and any other items are approximate and no responsibility is taken for any error, omission or mis-statement. This plan is for illustrative purposes only and should be used as such by any prospective purchaser. The services, systems and appliances shown have not been tested and no guarantee as to their operability or efficiency can be given.  
Made with Metropix ©2022

## Viewing Arrangements

Strictly by appointment

## Contact Details

121 Denmark Hill

London

SE5 8EN

[www.urbanvillagehomes.co.uk](http://www.urbanvillagehomes.co.uk)

[lettings@urbanvillagehomes.com](mailto:lettings@urbanvillagehomes.com)

020 3519 9121

Agents Note: Whilst every care has been taken to prepare these sales particulars, they are for guidance purposes only. All measurements are approximate and for general guidance purposes only and whilst every care has been taken to ensure their accuracy, they should not be relied upon and potential buyers are advised to recheck the measurements