



19 Crossthwaite Avenue | London |
SE5 8ET

Freehold

£900,000

- Four bedroom house
- Large south facing garden
- Side / corner plot - extensions possible
- recently renovated
- Lots of natural light
- Kitchen diner
- Ground floor W.C
- Excellent schools
- Fantastic transport links
- Great local parks

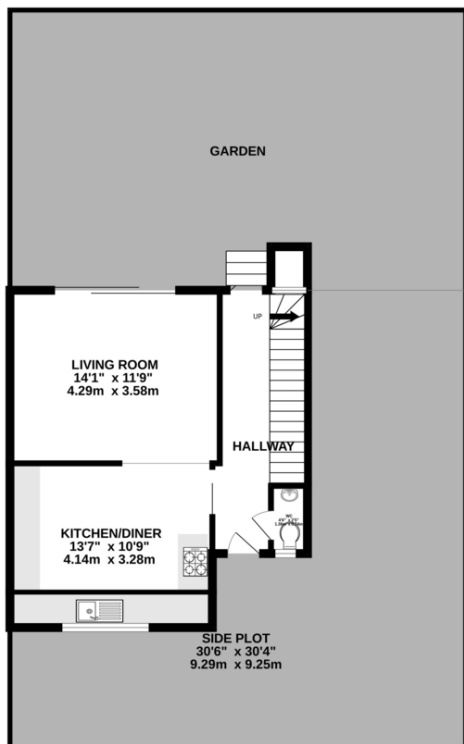


1950s bright and spacious, four double bedroom Freehold, family home. Complete with front garden, large south facing back garden and a side/corner plot with wooden shed. Lots of potential to extend including loft conversion and a two story side extension subject to planning consent which has been applied for. There is a good sized family kitchen, with space for a dining table, ground floor W.C. Sunny living room with doors out to the garden, four double bedrooms and a bathroom upstairs. Located in a popular residential area, around the corner from desirable Bessemer Grange primary school and close to The Charter secondary school, North Dulwich. Walking distance to Herne Hill, Sunray Gardens, Denmark Hill, Dulwich, Brockwell and Ruskin Parks. Good rail links to central London from North Dulwich (London

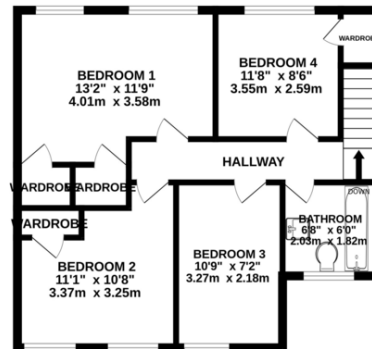


%epcGraph_c_1_300%

GROUND FLOOR
422 sq.ft. (39.2 sq.m.) approx.



1ST FLOOR
510 sq.ft. (47.4 sq.m.) approx.



FOUR BEDROOM, END TERRACE HOUSE.

TOTAL FLOOR AREA : 980sq.ft. (91.0 sq.m.) approx.

Whilst every attempt has been made to ensure the accuracy of the floorplan contained here, measurements of doors, windows, rooms and any other items are approximate and no responsibility is taken for any error, omission or mis-statement. This plan is for illustrative purposes only and should be used as such by any prospective purchaser. The services, systems and appliances shown have not been tested and no guarantee as to their operability or efficiency can be given.
Made with Metropix 6/2024

Viewing Arrangements

Strictly by appointment

Contact Details

121 Denmark Hill

London

SE5 8EN

www.urbanvillagehomes.co.uk

sales@urbanvillagehomes.com

020 3519 9121

Agents Note: Whilst every care has been taken to prepare these sales particulars, they are for guidance purposes only. All measurements are approximate and for general guidance purposes only and whilst every care has been taken to ensure their accuracy, they should not be relied upon and potential buyers are advised to recheck the measurements