



24a Wanless Road | London | SE24  
OHW

Leasehold

£495,000

- Two double bedrooms
- Top floor
- Two bathrooms
- Private balcony
- Open plan Kitchen / Living room
- Lots of natural light
- Local amenities
- Excellent transport links
- Ruskin Park
- Chain free

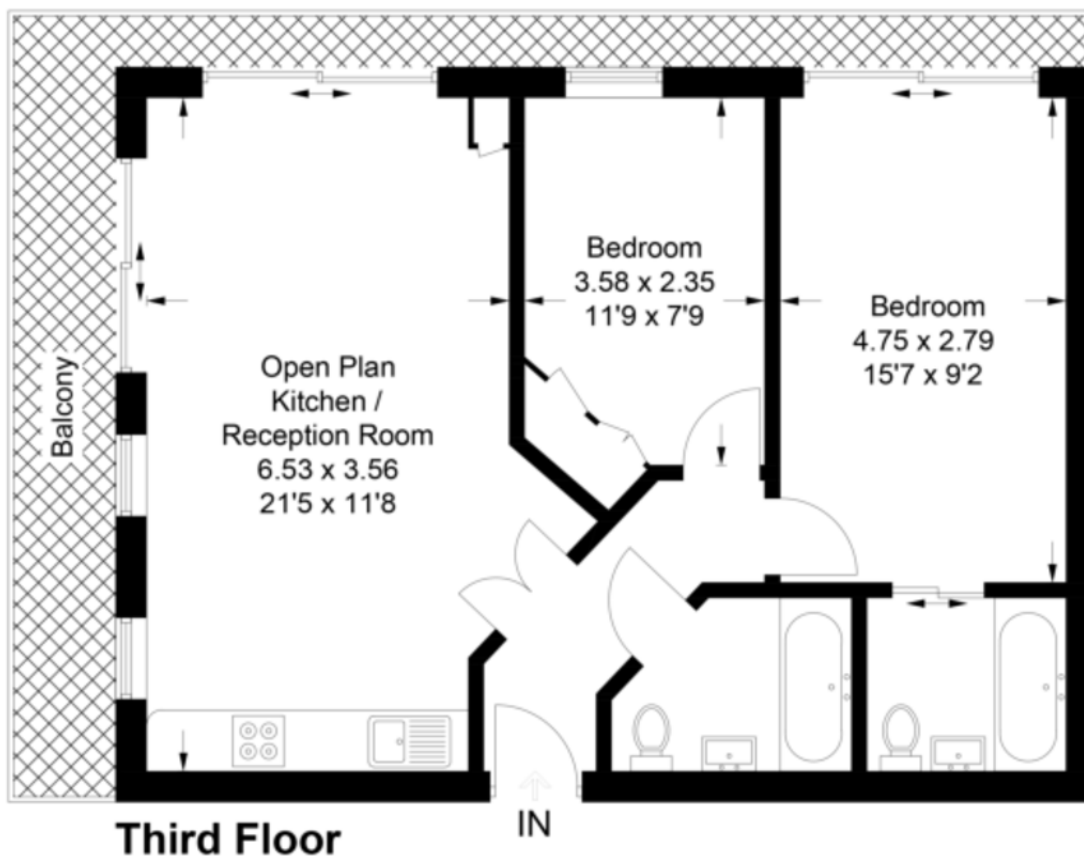




Modern and bright top floor apartment with large decked balcony. There are two double bedrooms and two bathrooms. This stylish apartment has slick design features and large windows in its large open plan reception / kitchen allowing maximum light. The building has a bike storage area and secure entry phone. Brixton tube is easily accessible and Brixton POP and vibrant Brixton Village are just a short walk away with a local gym just one road over. Loughborough Junction with direct, fast trains to Blackfriars & St. Pancras. Ruskin Park with it's summer bandstand concerts and village feel. Kings college hospital is a short walk.



Energy Efficiency Rating		
	Current	Potential
Very energy efficient - lower running costs		
(92+) A		
(81-91) B		
(69-80) C	79	79
(55-68) D		
(39-54) E		
(21-38) F		
(1-20) G		
Not energy efficient - higher running costs		
England & Wales	EU Directive	



Copyright www.pedderproperty.com © 2020

These plans are for representation purposes only as defined by RICS - Code of Measuring Practice. Not drawn to Scale. Windows and door openings are approximate. Please check all dimensions, stages and common features before making any decisions reliant upon them.

## Viewing Arrangements

Strictly by appointment

## Contact Details

121 Denmark Hill

London

SE5 8EN

[www.urbanvillagehomes.co.uk](http://www.urbanvillagehomes.co.uk)

[sales@urbanvillagehomes.com](mailto:sales@urbanvillagehomes.com)

020 3519 9121

Agents Note: Whilst every care has been taken to prepare these sales particulars, they are for guidance purposes only. All measurements are approximate are for general guidance purposes only and whilst every care has been taken to ensure their accuracy, they should not be relied upon and potential buyers are advised to recheck the measurements