



209 Ruskin Park House | London | SE5 8TN

Leasehold

£400,000

- Third floor
- Two bedroom
- Private south facing balcony
- Renovations required
- Original kitchen
- Original bathroom
- Denmark Hill Station
- Local amenities
- Ruskin Park
- Excellent Bus routes

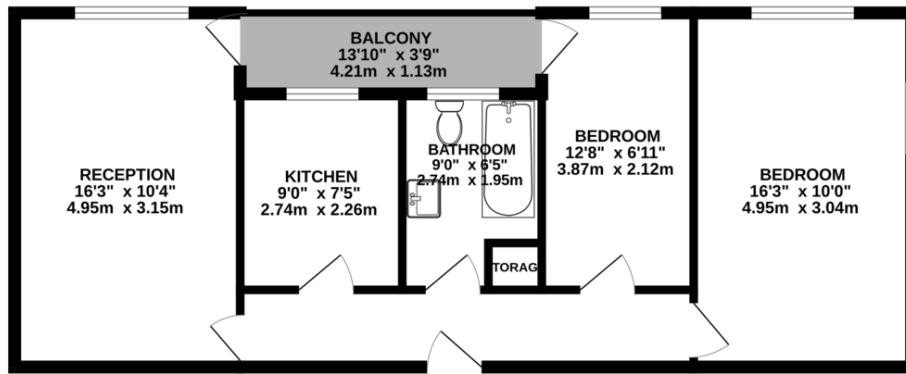


Third Floor two bed apartment in the popular Ruskin Park House estate. With original kitchen and bathroom this flat is a perfect project for someone wanting to inject life back into this charming flat. The flooring throughout is the original brown bakelite tile which adds to the mid-century charm. The spacious balcony is connected to both the reception and second bedroom. Despite the age of these original features the heating system is very modern. Ruskin Park House is a desirable building of purpose built apartments, maintained to a high standard by the onsite estate manager and caretakers. Very close to Denmark Hill station, Ruskin Park, Herne Hill and its Village farmers market. East Dulwich, Lordship Lane, Peckham and Brixton with vibrant nightlife are close by. Share in the leasehold management company,



%epcGraph_c_1_300%

GROUND FLOOR
615 sq.ft. (57.1 sq.m.) approx.



TOTAL FLOOR AREA : 615 sq.ft. (57.1 sq.m.) approx.

Whilst every attempt has been made to ensure the accuracy of the floorplan contained here, measurements of doors, windows, rooms and any other items are approximate and no responsibility is taken for any error, omission or mis-statement. This plan is for illustrative purposes only and should be used as such by any prospective purchaser. The services, systems and appliances shown have not been tested and no guarantee as to their operability or efficiency can be given.
Made with Metropix ©2023

Viewing Arrangements

Strictly by appointment

Contact Details

121 Denmark Hill

London

SE5 8EN

www.urbanvillagehomes.co.uk

sales@urbanvillagehomes.com

020 3519 9121

Agents Note: Whilst every care has been taken to prepare these sales particulars, they are for guidance purposes only. All measurements are approximate and for general guidance purposes only and whilst every care has been taken to ensure their accuracy, they should not be relied upon and potential buyers are advised to recheck the measurements