



Peckham Rye | London | SE15

Share of Freehold

£585,000

- Two double bedrooms
- Open plan
- Period features
- Modern Kitchen
- Share of freehold
- Lots of natural light
- Peckham Rye
- Lordship lane
- Excellent transport
- Call Urban Village to view
02035199121

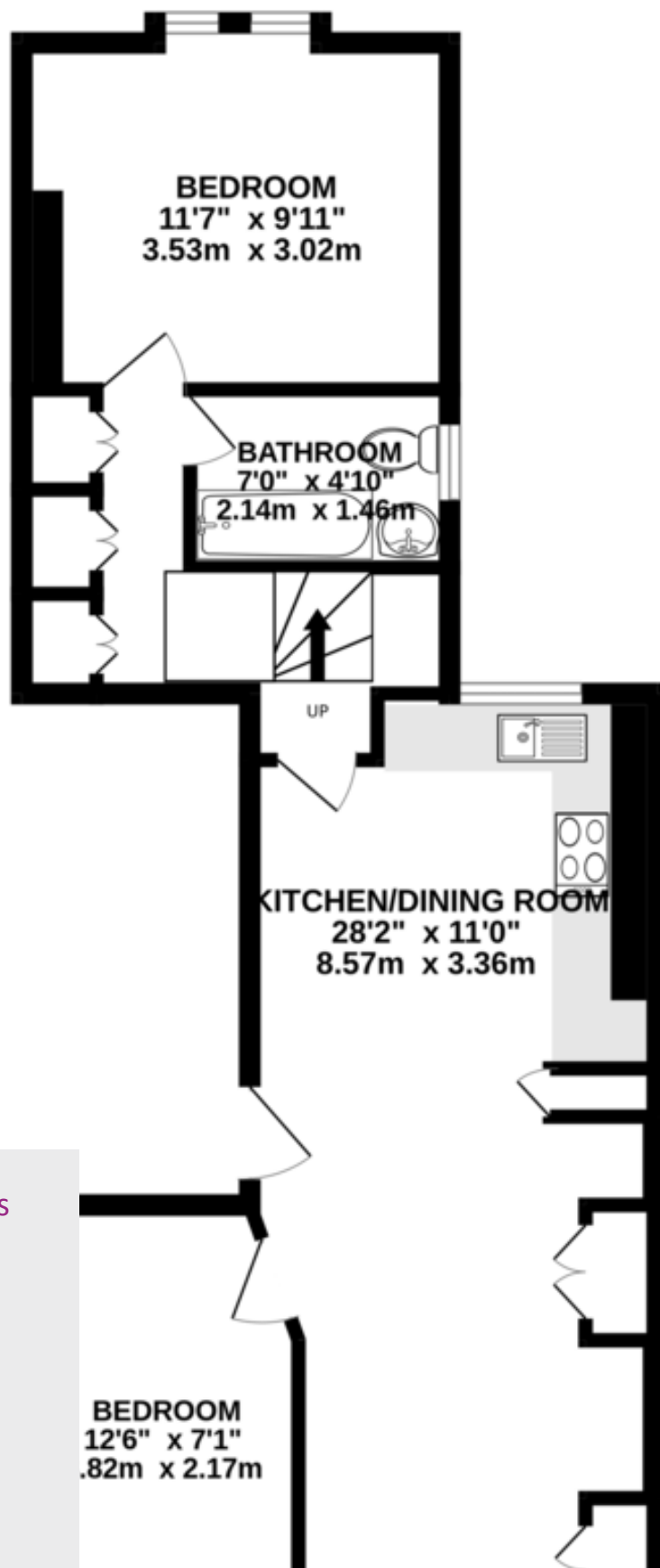


Two double bedroom first floor period apartment over looking Peckham Rye. The open plan spacious reception is the heart of this home, with exposed brickwork, wooden floors, high ceilings and sash windows. It is flooded with natural light, making it a perfect entertaining space. The newly fitted kitchen has fitted white goods and a large island. The property has two double bedrooms, a family bathroom and excellent storage solutions. Easy access to all the local attractions and transport links of Peckham Rye and East Dulwich, with independent shops, bars and restaurants on Lordship Lane, Bellenden Road, Rye and Nunhead Lane.



%epcGraph_c_1_300%

FIRST FLOOR
567 sq.ft. (52.7 sq.m.) approx.



Viewing Arrangements

Strictly by appointment

Contact Details

121 Denmark Hill

London

SE5 8EN

www.urbanvillagehomes.co.uk

sales@urbanvillagehomes.com

020 3519 9121

Agents Note: Whilst every care has been taken to prepare these sales particulars, they are for guidance purposes only. All measurements are approximate and for general guidance purposes only and whilst every care has been taken to ensure their accuracy, they should not be relied upon and potential buyers are advised to recheck the measurements.