



Peckham Rye | London | SE22

Share of Freehold

£450,000

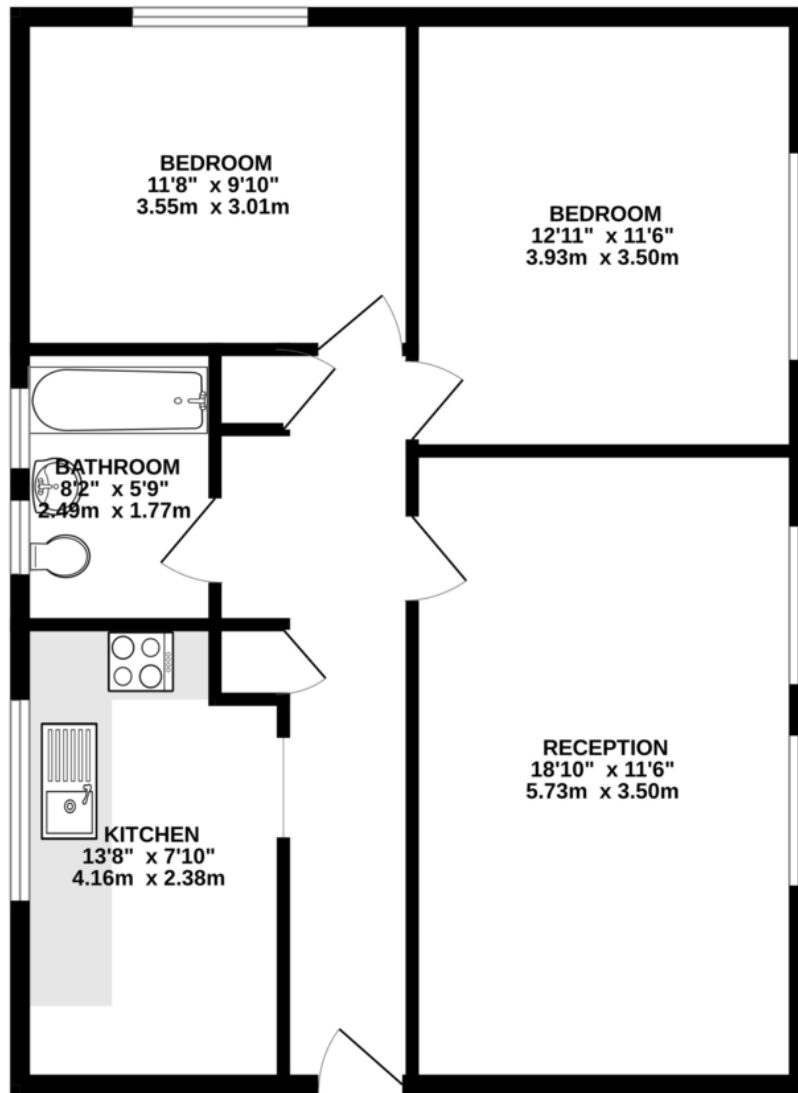
- Two double bedrooms
- Recently renovated
- Ground floor
- Lots of natural light
- Long lease
- Private allocated parking
- Local bars and restaurants
- Lordship lane
- Peckham Rye train station
- Peckham Rye park



This light and airy ground floor apartment has great views of Peckham Rye and is a must see. It's larger than average boasting 766 square feet, with it's own separate entrance, a separate eat-in Kitchen, a large sitting room, it's own parking place, private grounds surround the flat with a lawn directly outside the kitchen to hold summer barbecues, and being directly opposite the park is great for dog walking or exercise. The development is well managed and maintained and each owner has a share of the freehold. There is additional outside storage for a pram or a bike. It also has one of London's listed mulberry trees outside the kitchen window with abundant mulberries in the autumn for the chefs out there or the nature lovers since the squirrels and the birds can be watched from the kitchen window whilst you drink



GROUND FLOOR
733 sq.ft. (68.1 sq.m.) approx.



TOTAL FLOOR AREA : 733 sq.ft. (68.1 sq.m.) approx.

Whilst every attempt has been made to ensure the accuracy of the floorplan contained here, measurements of doors, windows, rooms and any other items are approximate and no responsibility is taken for any error, omission or mis-statement. This plan is for illustrative purposes only and should be used as such by any prospective purchaser. The services, systems and appliances shown have not been tested and no guarantee as to their operability or efficiency can be given.
Made with Metropix ©2024

Viewing Arrangements

Strictly by appointment

Contact Details

121 Denmark Hill

London

SE5 8EN

www.urbanvillagehomes.co.uk

sales@urbanvillagehomes.com

020 3519 9121

Agents Note: Whilst every care has been taken to prepare these sales particulars, they are for guidance purposes only. All measurements are approximate are for general guidance purposes only and whilst every care has been taken to ensure their accuracy, they should not be relied upon and potential buyers are advised to recheck the measurements