



Venetian Road | London | SE5 9RR

Share of Freehold

£460,000

- Maisonett
- 2 -3 bed
- Own entrance
- Potential to extend
- High ceilings
- character features
- Double glazed
- Kings college hospital
- Denmark Hill
- Ruskin park

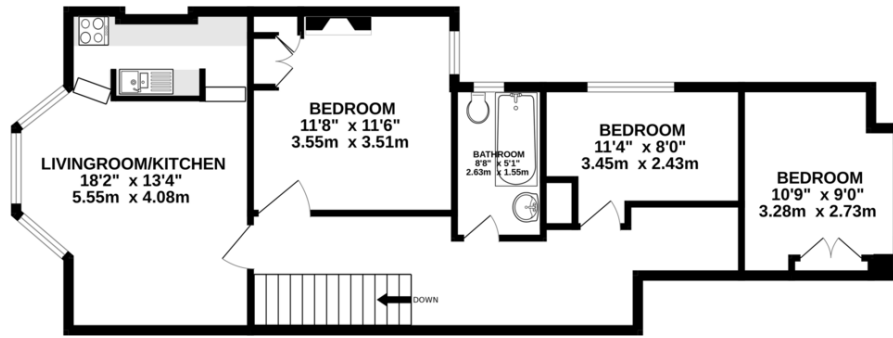


Share of freehold and chain free first floor maisonette, potential to further extend into the loft space, close to Kings College Hospital, Denmark Hill, Camberwell and Ruskin park. Has it's own entrance, currently presented as a three bed with open plan kitchen/ reception. The maisonette has a charming feel with very high ceilings, full of character and lots of natural light.



%epcGraph_c_1_300%

FIRST FLOOR
732 sq.ft. (68.0 sq.m.) approx.



THREE BEDROOM, FIRST FLOOR MAISONETTE

TOTAL FLOOR AREA: 732sq.ft. (68.0 sq.m.) approx.

Whilst every attempt has been made to ensure the accuracy of the floorplan contained here, measurements of doors, windows, rooms and any other items are approximate and no responsibility is taken for any error, omission or mis-statement. This plan is for illustrative purposes only and should be used as such by any prospective purchaser. The services, systems and appliances shown have not been tested and no guarantee as to their operability or efficiency can be given.
Made with Metropix ©2024

Viewing Arrangements

Strictly by appointment

Contact Details

121 Denmark Hill

London

SE5 8EN

www.urbanvillagehomes.co.uk

sales@urbanvillagehomes.com

020 3519 9121

Agents Note: Whilst every care has been taken to prepare these sales particulars, they are for guidance purposes only. All measurements are approximate and for general guidance purposes only and whilst every care has been taken to ensure their accuracy, they should not be relied upon and potential buyers are advised to recheck the measurements