



22 Kitson Road | London | SE5 7LF

%tenure%

£4,000 pcm

- Four double bedrooms
- Private garden
- Period features
- Lots of natural light
- Separate Kitchen / Living room
- Excellent location
- Burgess Park
- Excellent bus routes
- Local amenities
- Unfurnished

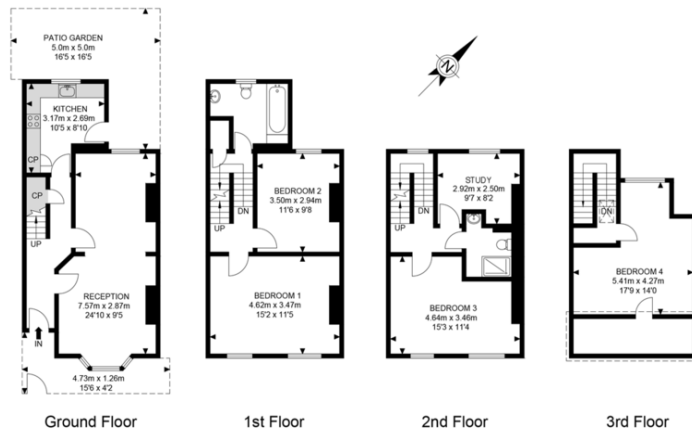


Recently decorated through out this property is arranged over three floors, has four good sized double bedrooms, two bathrooms, dual aspect reception and dining room, fully fitted kitchen which leads out to a private garden. The property has wood floors, high ceilings, and an abundance of natural light and is located in a leafy neighbourhood moments from Burgess Park. Offered unfurnished.



%epcGraph_c_1_300%

Kitson Road



APPROX. GROSS INTERNAL FLOOR AREA 1422.98 SQ FT / 132.20 SQM
APPROX. GROSS EXTERNAL FLOOR AREA 193.75 SQ FT / 18.0 SQM
RESTRICTED AREA 80.72 SQ FT / 7.50 SQM

measurements of doors, windows, rooms and any other items are approximates and no responsibility is taken for any error, omission or mis-statement. this plan is for illustrative purposes only and should be used as such by any prospective purchaser. the service, system and appliances shown have not been tested and no guarantee as to their operability or efficiency can be given.

© SpacePhoto
Photography and Floor Plan

Viewing Arrangements

Strictly by appointment

Contact Details

121 Denmark Hill

London

SE5 8EN

www.urbanvillagehomes.co.uk

lettings@urbanvillagehomes.com

020 3519 9121

Agents Note: Whilst every care has been taken to prepare these sales particulars, they are for guidance purposes only. All measurements are approximate are for general guidance purposes only and whilst every care has been taken to ensure their accuracy, they should not be relied upon and potential buyers are advised to recheck the measurements