



Bavent Road | London | SE5 9RY

£1,600 pcm

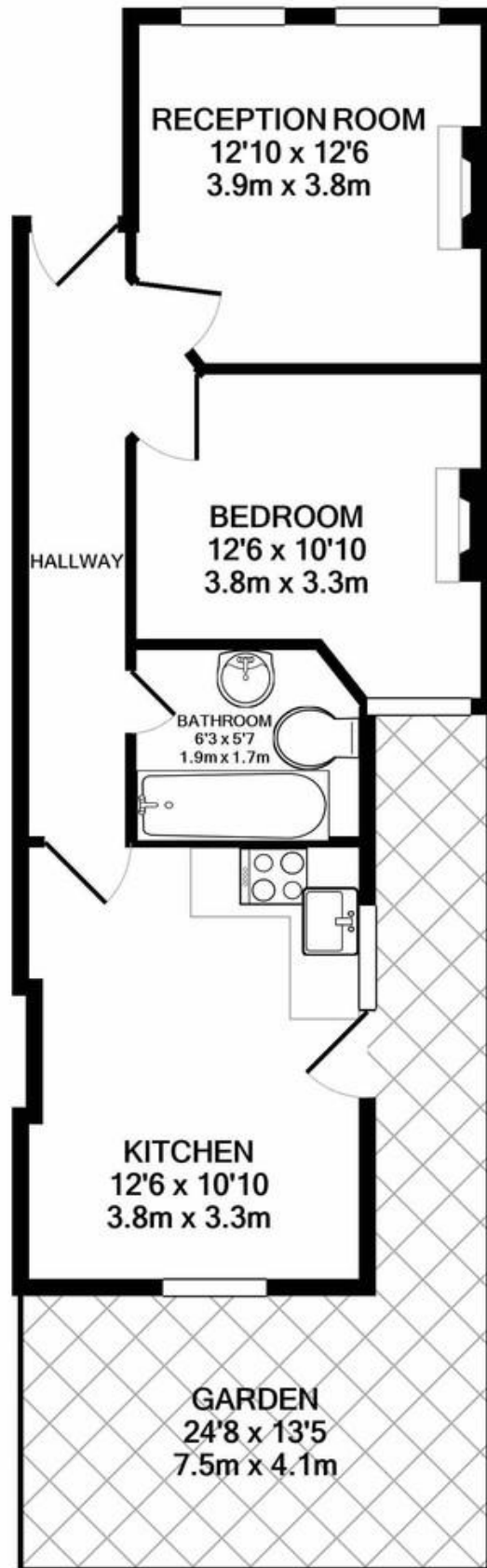
- Two double bedrooms
- Open plan reception
- Private back garden
- Recently redecorated
- available immediately
- Kings College Hospital
- Denmark Hill Station
- Loughborough Junction
- Brixton tube
- Camberwell



A lovely two double bedroom ground floor garden flat, recently redecorated, Two good sized double bedrooms, open plan kitchen / reception room and private back garden. Available immediately flexible furnishing. Parking permits not permitted on the road. The flat is located within walking distance to Loughborough junction rail, with direct access to London Blackfriars and Kings Cross. Also walking distance to Brixton tube, Denmark Hill and Kings college hospital. Nearby are a nice selection of grocery shops & cafes. Very close to Ruskin Park



%epcGraph_c_1_300%



Viewing Arrangements

Strictly by appointment

Contact Details

121 Denmark Hill

London

SE5 8EN

www.urbanvillagehomes.co.uk

lettings@urbanvillagehomes.com

020 3519 9121

APPROX. FLOOR AREA 408 SQ.FT. (37.9 SQ.M.)

It has been made to ensure the accuracy of the floor plan contained here, measurements of rooms and any other items are approximate and no responsibility is taken for any error,

Agents Note: Whilst every care has been taken to prepare these sales particulars, they are for guidance purposes only. All measurements are approximate and for general guidance purposes only and whilst every care has been taken to ensure their accuracy, they should not be relied upon and potential buyers are advised to recheck the measurements