



Grovelands Close | London | SE5

Freehold

£385,000

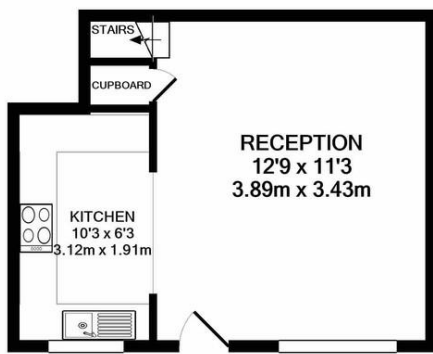
- One double bedroom
- Split level
- Front garden
- New kitchen
- Modern bathroom
- Off road parking
- Kings College Hospital
- Denmark Hill
- Ruskin park
- Excellent transport links



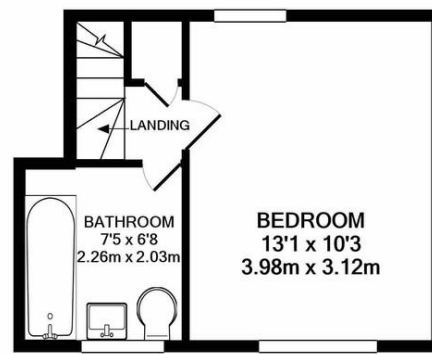
A lovely bright and cheerful, one bedroom apartment with pretty front garden, just off of Camberwell Grove .This stylish apartment is split level and has an allocated parking space. The ground floor has a good sized reception room and kitchen which has been recently upgraded with modern fitted appliances. Upstairs is a double bedroom and bathroom with three piece suite. Very close to Denmark Hill Station, Kings College Hospital and the amenities in Camberwell. A perfect first time buy in a convenient location in a quiet cul-de-sac with a close knit community. Freehold, estate charge of £700 per year.



Energy Efficiency Rating		
	Current	Potential
Very energy efficient - lower running costs		
(92-100) A		
(81-91) B		89
(69-80) C		
(55-68) D		
(39-54) E	41	
(21-38) F		
(1-20) G		
Not energy efficient - higher running costs		



GROUND FLOOR



1ST FLOOR

Whilst every attempt has been made to ensure the accuracy of the floor plan contained here, measurements of doors, windows, rooms and any other items are approximate and no responsibility is taken for any error, omission, or mis-statement. This plan is for illustrative purposes only and should be used as such by any prospective purchaser. The services, systems and appliances shown have not been tested and no guarantee as to their operability or efficiency can be given
 Made with Metropix ©2022

Viewing Arrangements

Strictly by appointment

Contact Details

121 Denmark Hill

London

SE5 8EN

www.urbanvillagehomes.co.uk

sales@urbanvillagehomes.com

020 3519 9121

Agents Note: Whilst every care has been taken to prepare these sales particulars, they are for guidance purposes only. All measurements are approximate are for general guidance purposes only and whilst every care has been taken to ensure their accuracy, they should not be relied upon and potential buyers are advised to recheck the measurements