



Champion Hill | London | SE5 8AH

Leasehold

£360,000

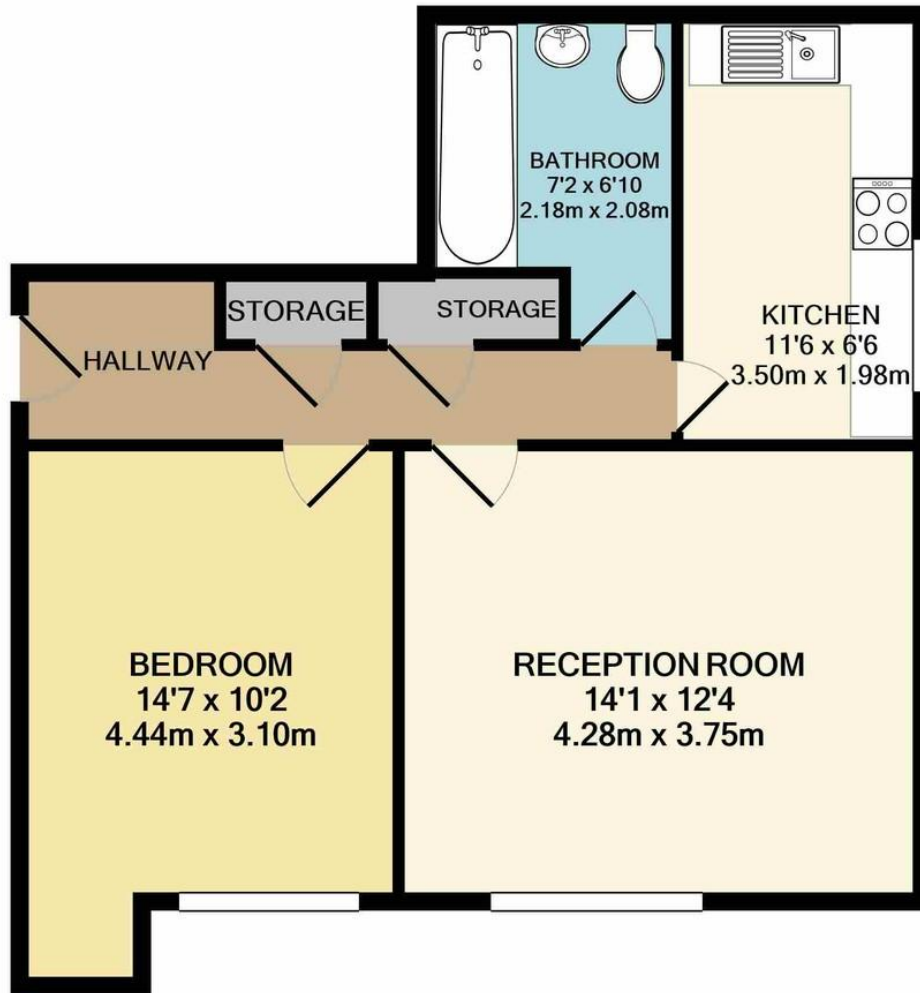
- One double bedroom
- New kitchen
- Modern bathroom
- Ground floor
- Off street parking
- Communal garden
- Share of freehold
- Ruskin Park
- Kings College Hospital
- Camberwell



Great buy to let potential, with gated parking space, would return around 5% annual gross yield. Beautifully presented, ground floor flat within a gated development with private parking. One double bedroom, well-fitted kitchen and modern bathroom, engineered wooden flooring throughout and a large communal garden. A short walk to Denmark Hill Station, Ruskin Park and King's College Hospital. Excellent local amenities and transport links. Share of freehold and chain free. Service charge includes building insurance and maintenance of grounds and electronic gates.



%epcGraph_c_1_300%



TOTAL APPROX. FLOOR AREA 508 SQ.FT. (47.2 SQ.M.)

Whilst every attempt has been made to ensure the accuracy of the floor plan contained here, measurements of doors, windows, rooms and any other items are approximate and no responsibility is taken for any error, omission, or mis-statement. This plan is for illustrative purposes only and should be used as such by any prospective purchaser. The services, systems and appliances shown have not been tested and no guarantee as to their operability or efficiency can be given
 Made with Metropix ©2022

Viewing Arrangements

Strictly by appointment

Contact Details

121 Denmark Hill

London

SE5 8EN

www.urbanvillagehomes.co.uk

sales@urbanvillagehomes.com

020 3519 9121

Agents Note: Whilst every care has been taken to prepare these sales particulars, they are for guidance purposes only. All measurements are approximate and for general guidance purposes only and whilst every care has been taken to ensure their accuracy, they should not be relied upon and potential buyers are advised to recheck the measurements