

Empress Mews | London | SE5

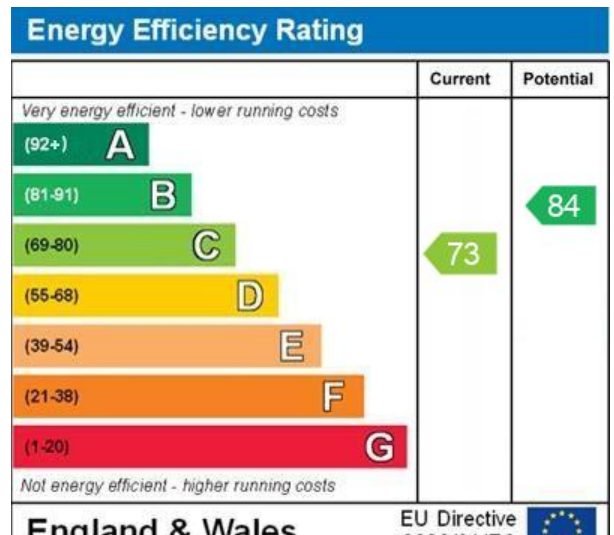
Freehold

£1,000,000

- Three double bedrooms
- Two bathrooms
- Private garden
- Gated development
- Private parking
- Excellent location
- Local amenities
- Loughborough Junction
- Ruskin Park
- Brixton tube



Located in a gated development near Camberwell, this three bedroom home has been thoughtfully designed with plenty of storage, clean finishes and double height ceilings. The ground floor centers around a large open plan living and dining space with a modern kitchen, fitted with an island, marble worktop and integrated appliances. Glass doors at the front and back bring in lots of light and open onto a private walled garden with afternoon sun. There's also a shower room and additional built in storage on this level. Upstairs, a mezzanine level overlooks the main living space. The first floor has two double bedrooms, including a main bedroom with dressing area and en-suite, plus a second room suitable as a guest room or office. The top floor features a third large double bedroom with Juliet balcony, along with a main bathroom that includes a freestanding bath and separate shower. The property also comes with an allocated parking



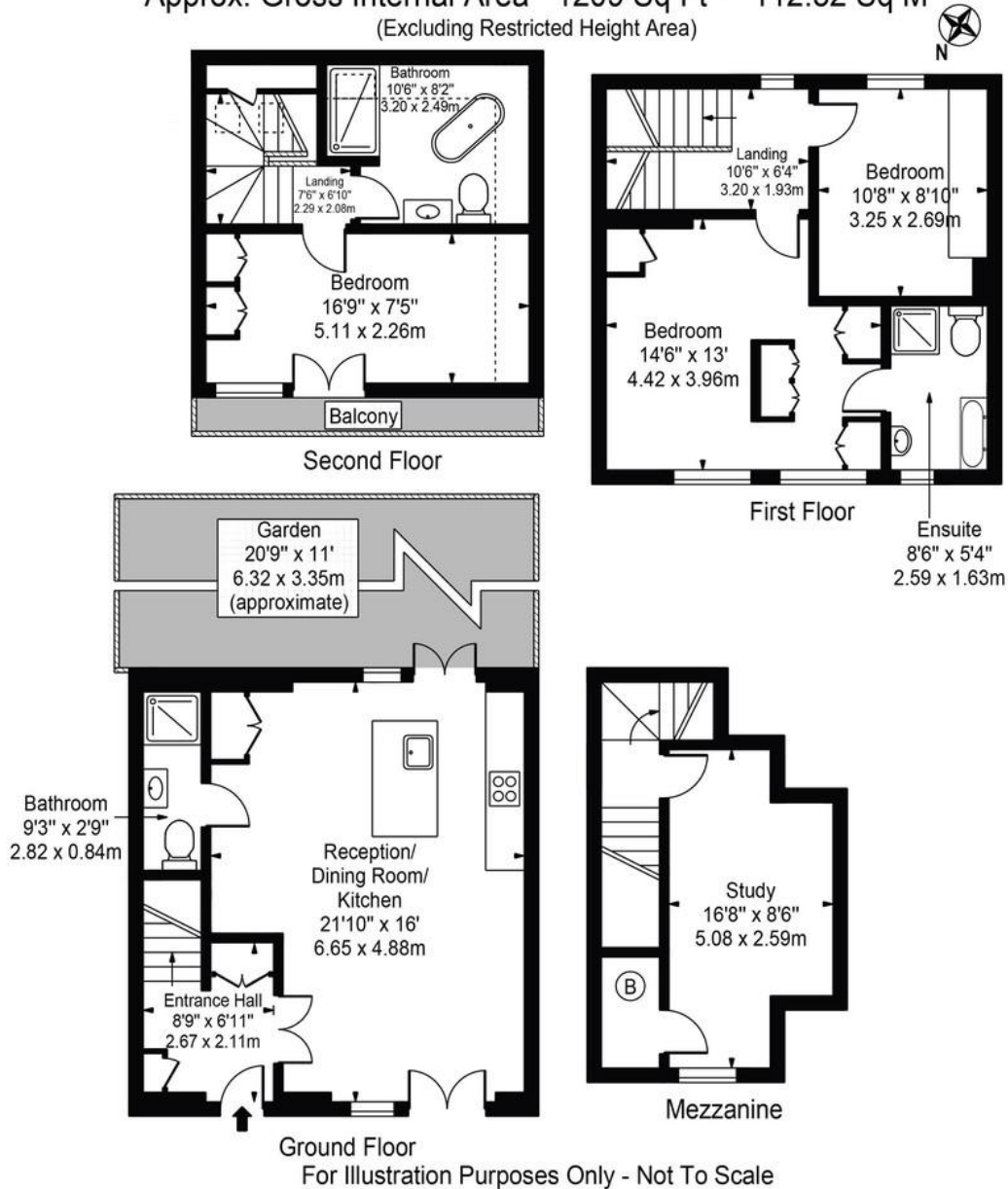
# Empress Mews, SE5 9BT

Approx. Total Internal Area 1253 Sq Ft - 116.41 Sq M

(Including Restricted Height Area)

Approx. Gross Internal Area 1209 Sq Ft - 112.32 Sq M

(Excluding Restricted Height Area)



This floor plan should be used as a general outline for guidance only and does not constitute in whole or in part an offer or contract. Any intending purchaser or lessee should satisfy themselves by inspection, searches, enquiries and full survey as to the correctness of each statement. Any areas, measurements or distances quoted are approximate and should not be used to value a property or be the basis of any sale or let.

## Viewing Arrangements

Strictly by appointment

## Contact Details

121 Denmark Hill

London

SE5 8EN

[www.urbanvillagehomes.co.uk](http://www.urbanvillagehomes.co.uk)

[sales@urbanvillagehomes.com](mailto:sales@urbanvillagehomes.com)

020 3519 9121

Agents Note: Whilst every care has been taken to prepare these sales particulars, they are for guidance purposes only. All measurements are approximate and are for general guidance purposes only and whilst every care has been taken to ensure their accuracy, they should not be relied upon and potential buyers are advised to recheck the measurements