



156 Ruskin Park House | London |
SE5 8TL

Leasehold

£375,000

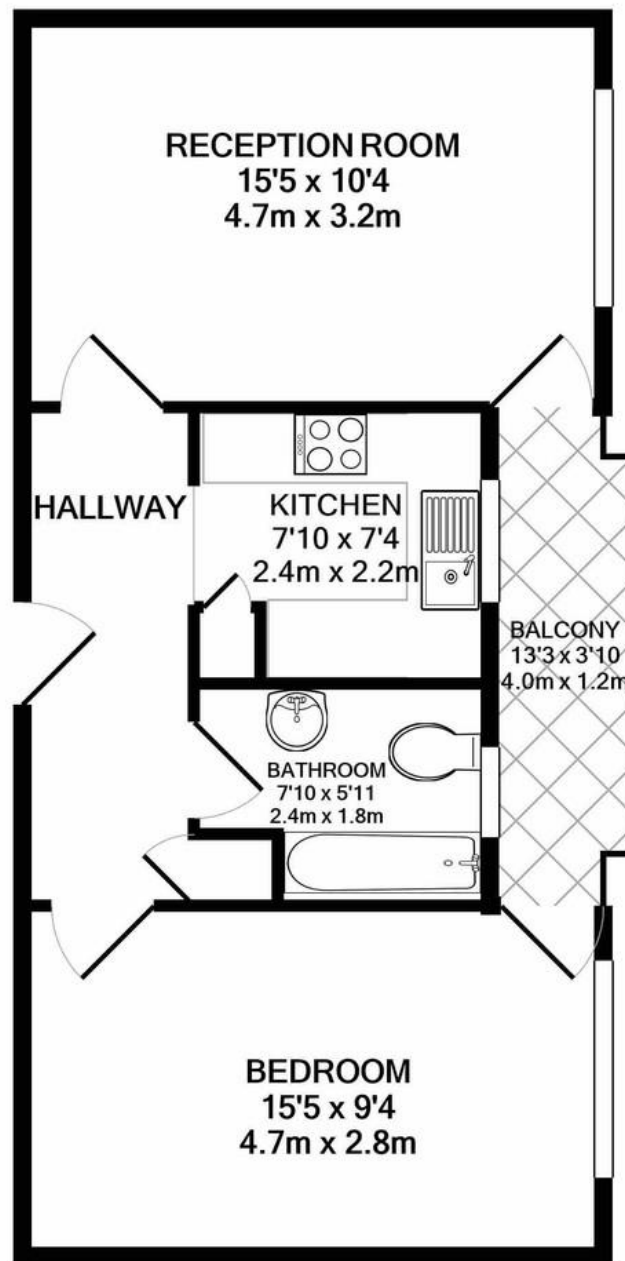
- One double bedroom
- Third floor
- Large reception room
- Private balcony
- Integrated appliances
- Long Lease
- Ruskin Park
- Kings College Hospital
- Denmark Hill Station
- Herne Hill



Third floor one bed apartment in the popular Ruskin Park House estate. Overlooking the gardens this flat is neutrally decorated with lots of character. The fitted kitchen has modern integrated appliances and the bathroom has a fitted three piece suite with shower over bath. The balcony is accessible from the living room and bedroom. Ruskin Park House is a desirable building of purpose built apartments, maintained to a high standard by the onsite estate manager and caretakers. Very close to Denmark Hill station, Ruskin Park, Herne Hill and its Village farmers market, East Dulwich, Lordship Lane, Peckham and Brixton with vibrant nightlife are close by. Share in the leasehold management company, long lease.



%epcGraph_c_1_300%



TOTAL APPROX. FLOOR AREA 469 SQ.FT. (43.5 SQ.M.)

Whilst every attempt has been made to ensure the accuracy of the floor plan contained here, measurements and any other items are approximate and no responsibility is taken for any error, omissions or inaccuracy. This plan is for illustrative purposes only and should be used as such by any prospective buyer. All services, systems and appliances shown have not been tested and no guarantee is given as to their operability or efficiency can be given.

Made with Metropix ©2021

Viewing Arrangements

Strictly by appointment

Contact Details

121 Denmark Hill

London

SE5 8EN

www.urbanvillagehomes.co.uk

sales@urbanvillagehomes.com

020 3519 9121

Agents Note: Whilst every care has been taken to prepare these sales particulars, they are for guidance purposes only. All measurements are approximate and for general guidance purposes only and whilst every care has been taken to ensure their accuracy, they should not be relied upon and potential buyers are advised to recheck the measurements.