



Gibbon Road | London | SE15

Freehold

£425,000

- One double bedroom
- First floor
- Period features
- Lots of natural light
- Separate Kitchen / Living room
- Lots of storage
- Nunhead
- Peckham Rye Park
- Local amenities
- Excellent bus routes

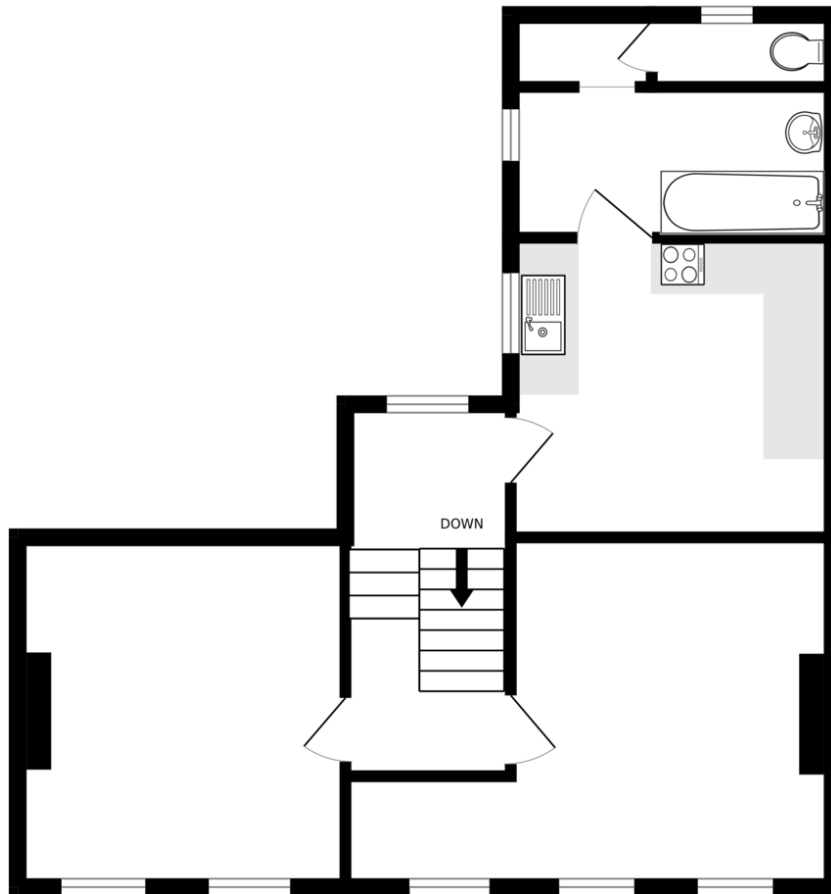


One bedroom first floor flat in the heart of Nunhead. Located on the first floor of a period conversion, this bright flat offers 782 Sq.ft of well-presented living space. The property features an eat in kitchen, spacious living room, separate bathroom and WC. Double-glazed windows throughout and ample storage. The flat is conveniently close to both Nunhead station and Queen's Road Peckham, and all the local amenities and excellent transport links Nunhead has to offer.



Score	Energy rating	Current	Potential
92+	A		
81-91	B		
69-80	C	70 C	79 C
55-68	D		
39-54	E		
21-38	F		
1-20	G		

FIRST FLOOR
521 sq.ft. (48.4 sq.m.) approx.



TOTAL FLOOR AREA : 521 sq.ft. (48.4 sq.m.) approx.

Whilst every attempt has been made to ensure the accuracy of the floorplan contained here, measurements of doors, windows, rooms and any other items are approximate and no responsibility is taken for any error, omission or mis-statement. This plan is for illustrative purposes only and should be used as such by any prospective purchaser. The services, systems and appliances shown have not been tested and no guarantee as to their operability or efficiency can be given.
Made with Metropix ©2025

Viewing Arrangements

Strictly by appointment

Contact Details

121 Denmark Hill

London

SE5 8EN

www.urbanvillagehomes.co.uk

sales@urbanvillagehomes.com

020 3519 9121

Agents Note: Whilst every care has been taken to prepare these sales particulars, they are for guidance purposes only. All measurements are approximate and are for general guidance purposes only and whilst every care has been taken to ensure their accuracy, they should not be relied upon and potential buyers are advised to recheck the measurements