



Thurlow Park Road | London | SE21

Leasehold

£325,000

- One double bedroom
- Open plan
- Lots of natural light
- Modern Kitchen
- Chain free
- Local amenities
- Tulse Hill
- West Dulwich
- Norwood
- Local amenities

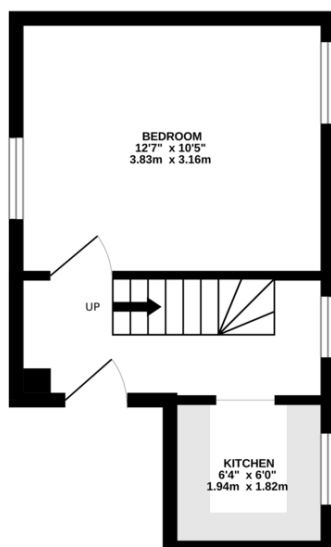


Well presented one-bedroom flat occupies the first and second floors of an attractive Victorian conversion. Blending period character with modern comforts, this split-level home offers a unique layout ideal for first-time buyers or investors. The first floor comprises a bright and spacious living area with high ceilings, large sash windows, and original features that add charm and elegance. A separate modern kitchen provides ample storage and worktop space. Upstairs, the generous double bedroom and a contemporary bathroom suite. This well-maintained property benefits from a long lease, gas central heating, and excellent natural light throughout. Ideally situated close to local shops, cafes, and transport links in Tulse Hill, Norwood and West Dulwich, it provides easy access to central London and surrounding areas.

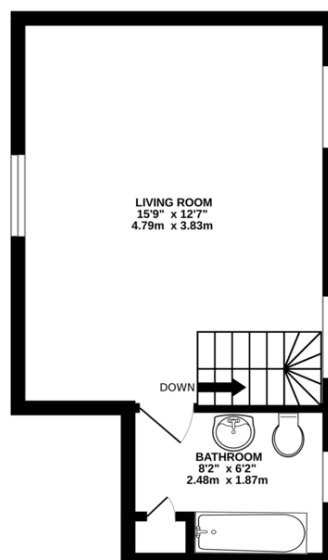


Score	Energy rating	Current	Potential
92+	A		
81-91	B		
69-80	C		75 C
55-68	D	58 D	
39-54	E		
21-38	F		
1-20	G		

FIRST FLOOR
248 sq.ft. (23.0 sq.m.) approx.



SECOND FLOOR
247 sq.ft. (23.0 sq.m.) approx.



TOTAL FLOOR AREA : 495sq.ft. (46.0 sq.m.) approx.

Whilst every attempt has been made to ensure the accuracy of the floorplan contained here, measurements of doors, windows, rooms and any other items are approximate and no responsibility is taken for any error, omission or mis-statement. This plan is for illustrative purposes only and should be used as such by any prospective purchaser. The services, systems and appliances shown have not been tested and no guarantee as to their operability or efficiency can be given.
Made with Metropix 6/2025

Viewing Arrangements

Strictly by appointment

Contact Details

121 Denmark Hill

London

SE5 8EN

www.urbanvillagehomes.co.uk

sales@urbanvillagehomes.com

020 3519 9121

Agents Note: Whilst every care has been taken to prepare these sales particulars, they are for guidance purposes only. All measurements are approximate are for general guidance purposes only and whilst every care has been taken to ensure their accuracy, they should not be relied upon and potential buyers are advised to recheck the measurements