



Hooks Close | London | SE15

£3,400 pcm


- Four double bedrooms
- Private garden
- Town house
- Recently redecorated
- Separate Kitchen / Living room
- Excellent location
- Local amenities
- Excellent bus routes
- Queens Road Peckham
- Nunhead



A four double bedroom town house, on the ground floor is a good sized kitchen with room for a dining table and a separate living room that leads out to a private garden. Split across the first and second floor are four double bedrooms and the family bathroom. Conveniently located in the heart of trendy Peckham with excellent pubs restaurants and cafes all within easy walking distance. Excellent transport links from Peckham Rye & Queens Road, served by the Thameslink, Overground and National Rail services.



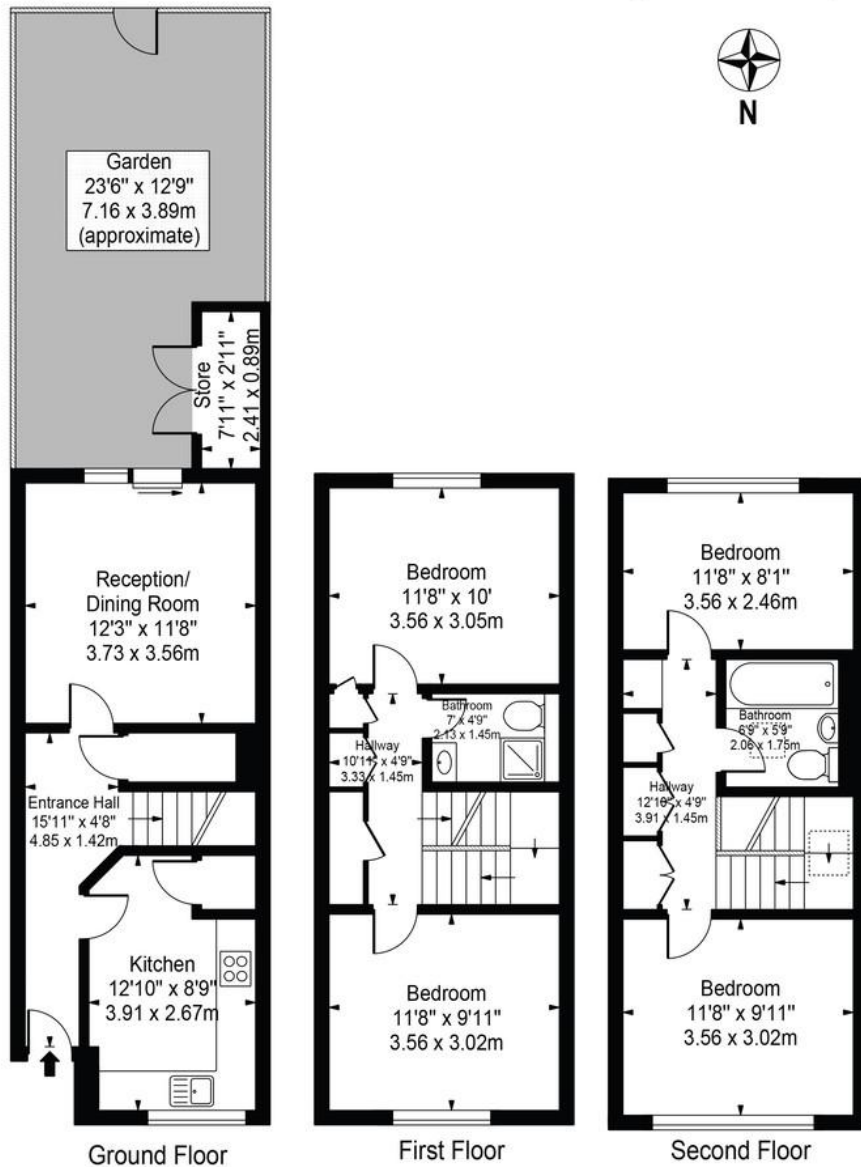


Energy Efficiency Rating		
	Current	Potential
Very energy efficient - lower running costs		
(92+) A		
(81-91) B		
(69-80) C	75	80
(55-68) D		
(39-54) E		
(21-38) F		
(1-20) G		
Not energy efficient - higher running costs		
England & Wales	EU Directive 	

# Hooks Close, SE15 2TP

Approx. Gross Internal Area 1100 Sq Ft - 102.19 Sq M  
(Excluding Shed)

Approx. Gross Internal Area Of Shed 23 Sq Ft - 2.14 Sq M



For Illustration Purposes Only - Not To Scale

This floor plan should be used as a general outline for guidance only and does not constitute in whole or in part an offer or contract. Any intending purchaser or lessee should satisfy themselves by inspection, searches, enquiries and full survey as to the correctness of each statement. Any areas, measurements or distances quoted are approximate and should not be used to value a property or be the basis of any sale or let.

## Viewing Arrangements

Strictly by appointment

## Contact Details

121 Denmark Hill

London

SE5 8EN

[www.urbanvillagehomes.co.uk](http://www.urbanvillagehomes.co.uk)

[lettings@urbanvillagehomes.com](mailto:lettings@urbanvillagehomes.com)

020 3519 9121

Agents Note: Whilst every care has been taken to prepare these sales particulars, they are for guidance purposes only. All measurements are approximate and for general guidance purposes only and whilst every care has been taken to ensure their accuracy, they should not be relied upon and potential buyers are advised to recheck the measurements