

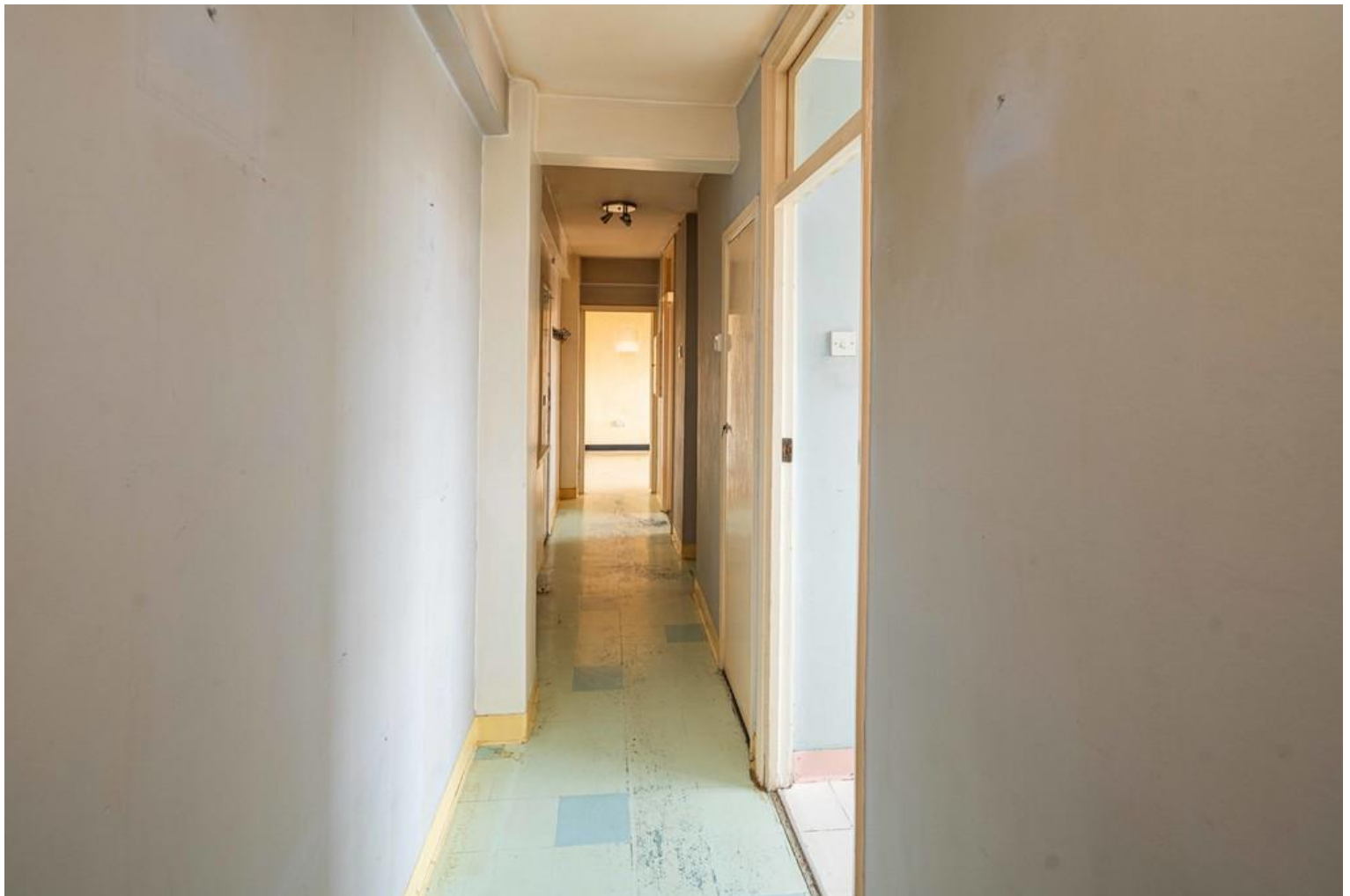


Champion Hill | London | SE5 8TQ

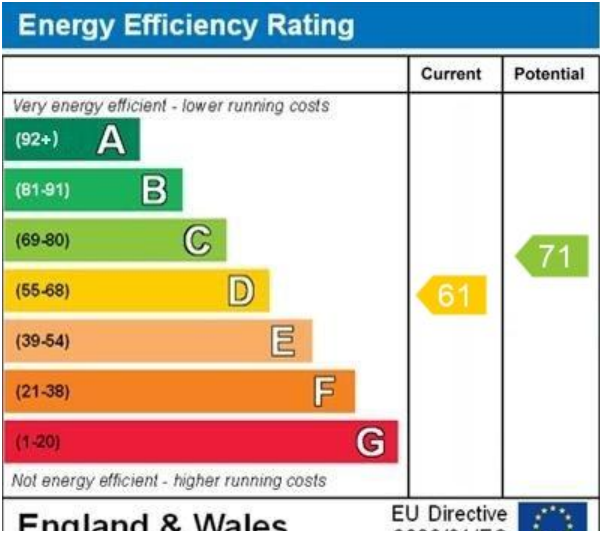
Leasehold

£470,000

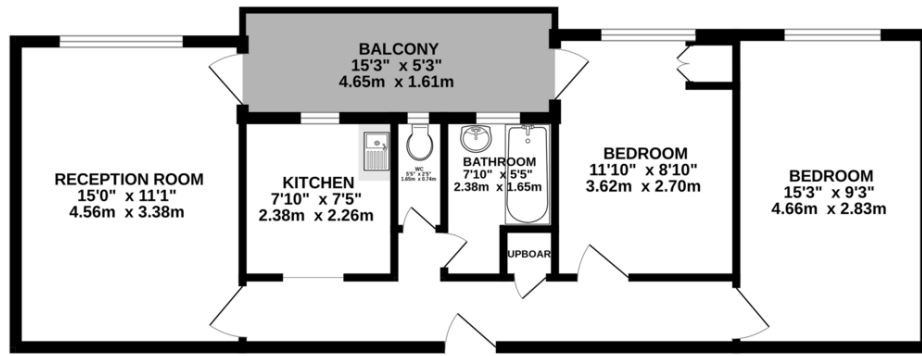
- Renovation opportunity
- 2 bedroom
- Ruskin Park
- Off Road parking available
- Balcony
- Third floor
- Chain free
- Denmark Hill station
- Community feel
- Local amenities



Two bedroom apartment on the third floor in the sought after Ruskin Park house, an opportunity to renovate and add value. The balcony is accessible from the living room and bedroom. Ruskin Park House is a desirable building of purpose built apartments, maintained to a high standard by the onsite estate manager and caretakers. Very close to Denmark Hill station, Ruskin Park, Herne Hill and its Village farmers market, East Dulwich, Lordship Lane, Peckham and Brixton with vibrant nightlife are close by. Share in the leasehold management company, long lease.



THIRD FLOOR
615 sq.ft. (57.1 sq.m.) approx.



TOTAL FLOOR AREA : 615 sq.ft. (57.1 sq.m.) approx.
Whilst every attempt has been made to ensure the accuracy of the floorplan contained here, measurements of doors, windows, rooms and any other items are approximate and no responsibility is taken for any error, omission or mis-statement. This plan is for illustrative purposes only and should be used as such by any prospective purchaser. The services, systems and appliances shown have not been tested and no guarantee as to their operability or efficiency can be given.
Made with Metropix C025

Viewing Arrangements

Strictly by appointment

Contact Details

121 Denmark Hill

London

SE5 8EN

www.urbanvillagehomes.co.uk

sales@urbanvillagehomes.com

020 3519 9121

Agents Note: Whilst every care has been taken to prepare these sales particulars, they are for guidance purposes only. All measurements are approximate and for general guidance purposes only and whilst every care has been taken to ensure their accuracy, they should not be relied upon and potential buyers are advised to recheck the measurements.