

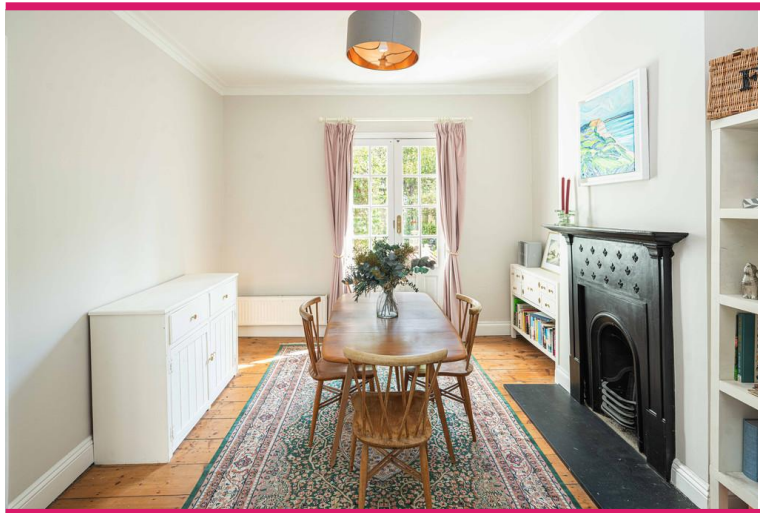


Kenbury Street | London | SE5

Freehold

£850,000

- Three bedrooms
- Open plan
- Period features
- Private garden
- Large family bathroom
- Lots of natural light
- Loughborough Junction
- Local amenities
- Ruskin Park
- Excellent bus routes

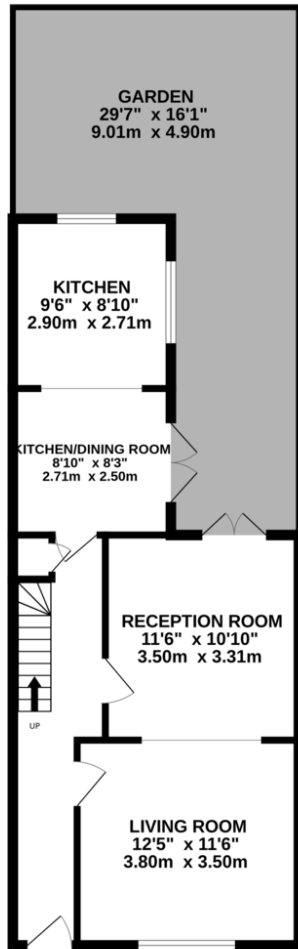


Mid terraced house with period features conveniently located with in walking distance to multiple transport links. The house has a bright double reception room to the front and an open plan kitchen and dining room to the rear both have direct access to the private walled garden. Tastefully decorated throughout with original fireplaces a coving in place. Upstairs are three bedrooms and a large family bathroom with walk in shower and free standing bath. Scope to extend STPP Ideally situated for excellent transport links, including Loughborough Junction, Denmark Hill, and Brixton tube station. Enjoy easy access to Brixton Village, Ruskin Park, King's College Hospital, and the vibrant shops, bars, and restaurants of Camberwell and Brixton.

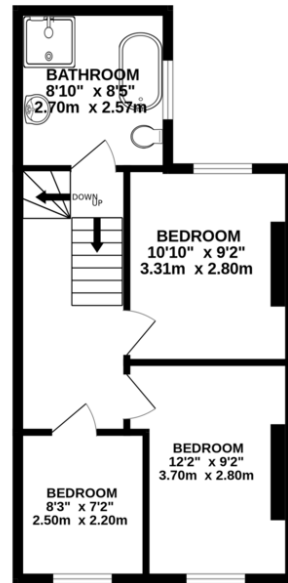


%epcGraph_c_1_300%

GROUND FLOOR
527 sq.ft. (48.9 sq.m.) approx.



1ST FLOOR
419 sq.ft. (38.9 sq.m.) approx.



TOTAL FLOOR AREA : 945 sq.ft. (87.8 sq.m.) approx.

Whilst every attempt has been made to ensure the accuracy of the floorplan contained here, measurements of doors, windows, rooms and any other items are approximate and no responsibility is taken for any error, omission or mis-statement. This plan is for illustrative purposes only and should be used as such by any prospective purchaser. The services, systems and appliances shown have not been tested and no guarantee as to their operability or efficiency can be given.
Made with Metropix 5/2025

Viewing Arrangements

Strictly by appointment

Contact Details

121 Denmark Hill

London

SE5 8EN

www.urbanvillagehomes.co.uk

sales@urbanvillagehomes.com

020 3519 9121

Agents Note: Whilst every care has been taken to prepare these sales particulars, they are for guidance purposes only. All measurements are approximate are for general guidance purposes only and whilst every care has been taken to ensure their accuracy, they should not be relied upon and potential buyers are advised to recheck the measurements