



Horsman House Goschen Estate | |
SE5 0YL

Leasehold

£325,000

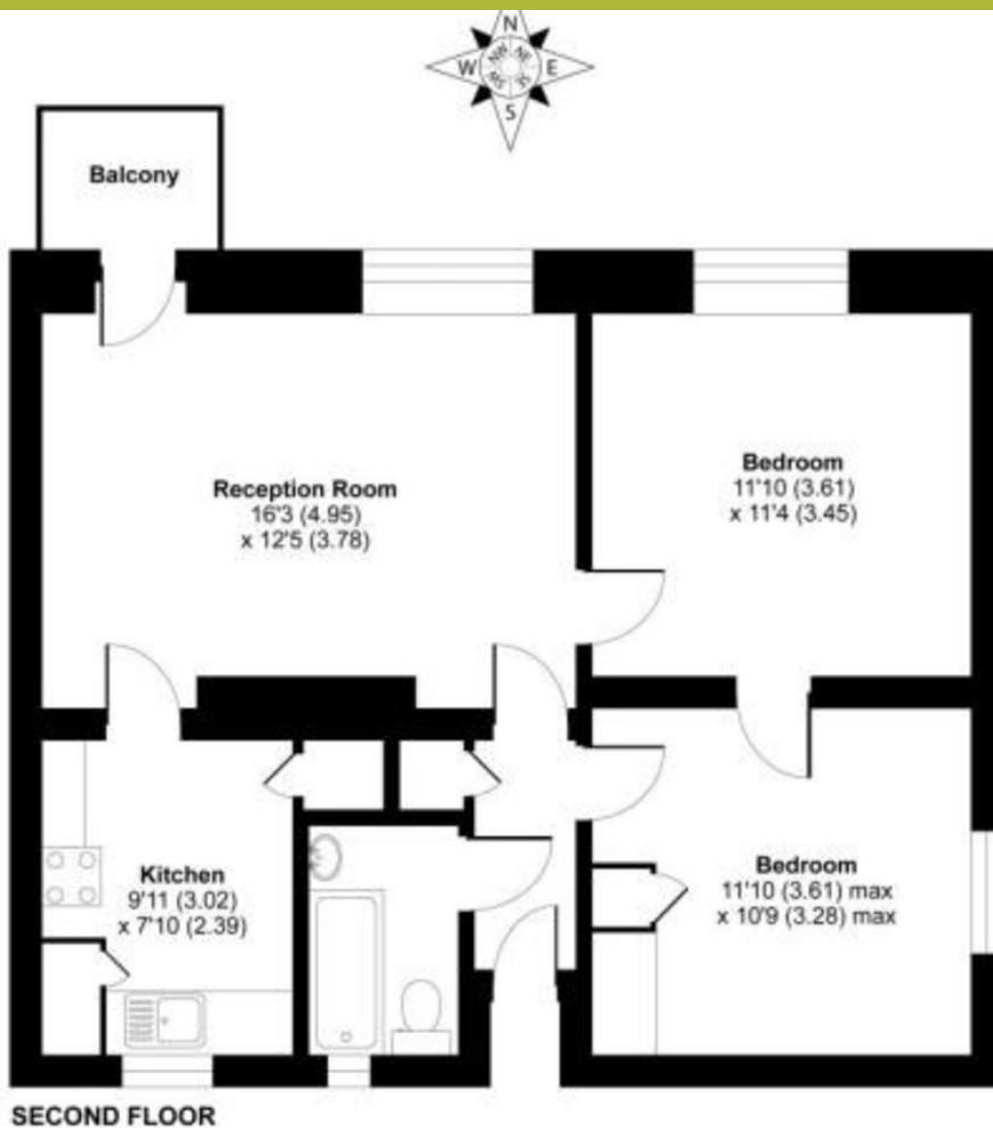
- Two double bedrooms
- Separate kitchen and reception
- Residents parking
- Long lease
- Chain free
- Excellent location
- Local amenities
- Burgess Park
- Elephant and Castle
- Excellent bus routes



This great flat could be an ideal starter home, or equally a good rental investment. This property offers two double bedrooms separate kitchen and reception room. Bethwin Road runs parallel to the Grosvenor Park Conservation Area, a very convenient location with great transport options. There is an excellent bus network operating nearby on Camberwell Road with services to numerous destinations and easy access to central London and Elephant and Castle tube. There are underground stations on the Northern and Bakerloo lines, as well as an overground train service all close by. The lovely open spaces of Burgess Park are a short walk away.



%epcGraph_c_1_300%



Horsman House, Bethwin Road, London, SE5

Viewing Arrangements

Strictly by appointment

Contact Details

121 Denmark Hill

London

SE5 8EN

www.urbanvillagehomes.co.uk

sales@urbanvillagehomes.com

020 3519 9121

Agents Note: Whilst every care has been taken to prepare these sales particulars, they are for guidance purposes only. All measurements are approximate are for general guidance purposes only and whilst every care has been taken to ensure their accuracy, they should not be relied upon and potential buyers are advised to recheck the measurements