



Endymion Road | London | SW2 2BU

Leasehold

£470,000

- Open plan
- Immaculate condition
- Two double bedrooms
- Exposed brick
- Period features
- Split level
- Brixton tube
- Light and airy
- Polished floorboards
- Chain free



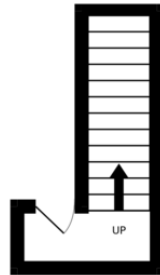
Two-bedroom Victorian conversion in immaculate condition. This split-level apartment feels light spacious and airy throughout. Offering a stunning open plan kitchen, reception with fireplace and exposed brick. Two double bedrooms, beautiful polished original floor boards throughout and designer bathroom.



%epcGraph_c_1_300%

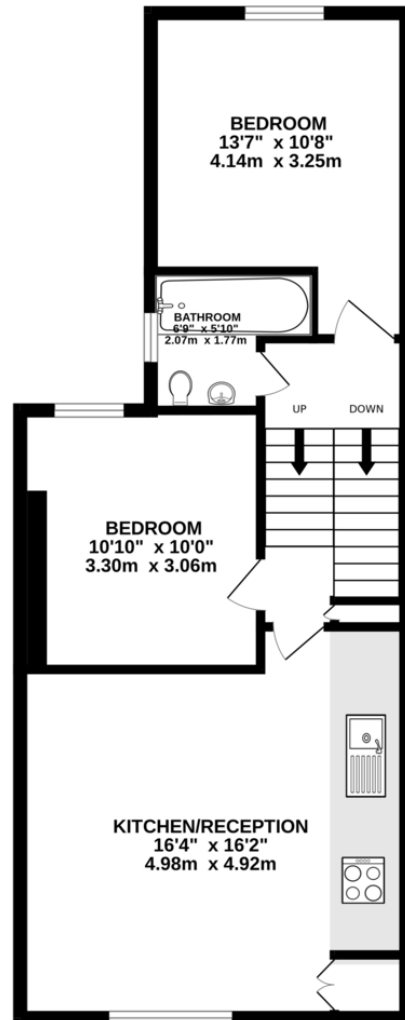
FIRST FLOOR
41 sq.ft. (3.8 sq.m.) approx.

SECOND FLOOR
560 sq.ft. (51.9 sq.m.) approx.



TOTAL FLOOR AREA : 570sq.ft. (53.0 sq.m.) approx.

Whilst every attempt has been made to ensure the accuracy of the floorplan contained here, measurements of doors, windows, rooms and any other items are approximate and no responsibility is taken for any error, omission or mis-statement. This plan is for illustrative purposes only and should be used as such by any prospective purchaser. The services, systems and appliances shown have not been tested and no guarantee as to their operability or efficiency can be given.
Made with Metropix ©2025



Viewing Arrangements

Strictly by appointment

Contact Details

121 Denmark Hill

London

SE5 8EN

www.urbanvillagehomes.co.uk

sales@urbanvillagehomes.com

020 3519 9121

Agents Note: Whilst every care has been taken to prepare these sales particulars, they are for guidance purposes only. All measurements are approximate are for general guidance purposes only and whilst every care has been taken to ensure their accuracy, they should not be relied upon and potential buyers are advised to recheck the measurements