



Oakhurst Grove | London | SE22

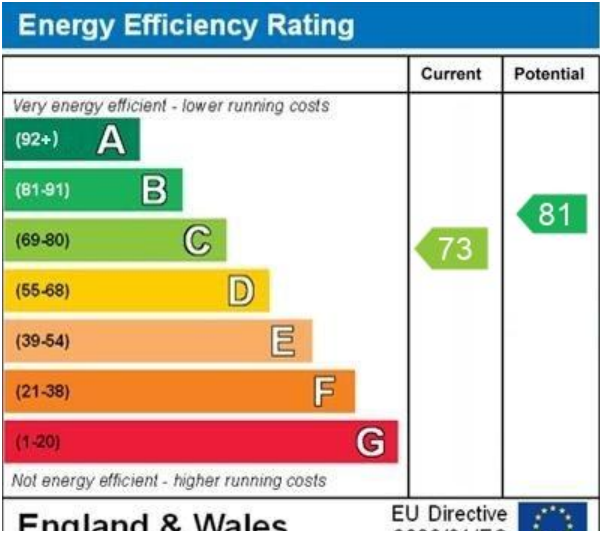
£1,800 pcm

- One double bedroom
- First floor
- Open plan
- Lots of natural light
- Modern kitchen
- Local amenities
- Lordship Lane
- Excellent bus routes
- Bellenden Village
- Peckham Rye



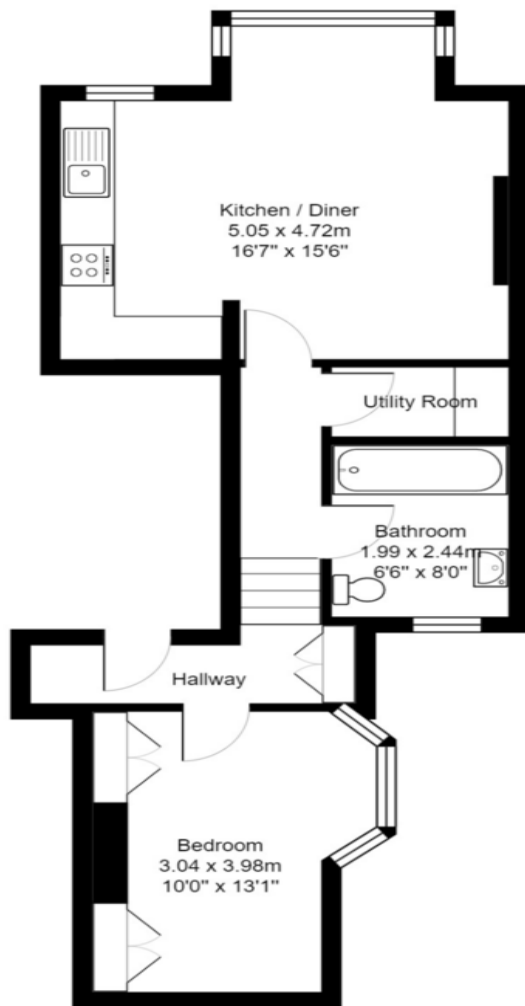


A beautiful one-bedroom first floor period flat on a residential road between East Dulwich and Peckham Rye. Open-plan living, kitchen & dining room with a beautiful bay window and a cast iron fire place. The property is well-presented throughout, with a double bedroom fitted with bespoke wardrobes as well as extra storage in the hallway. Lordship Lane and Bellenden Road is where you will find lots of great local independent businesses including top restaurants, pubs and cafes.





Oakhurst Grove, London, SE22



Total Area: 47.1 m<sup>2</sup> ... 507 ft<sup>2</sup>

Whilst every attempt has been made to ensure the accuracy of the floor plan contained here, measurements of doors, windows, rooms and any other items are approximate and no responsibility is taken for any error, omission, or misstatement. This plan is for illustrative purposes only and should be used as such by any prospective purchaser. The services, systems and appliances shown have not been tested and no guarantee as to their operability can be given.

## Viewing Arrangements

Strictly by appointment

## Contact Details

121 Denmark Hill

London

SE5 8EN

[www.urbanvillagehomes.co.uk](http://www.urbanvillagehomes.co.uk)

[lettings@urbanvillagehomes.com](mailto:lettings@urbanvillagehomes.com)

020 3519 9121

Agents Note: Whilst every care has been taken to prepare these sales particulars, they are for guidance purposes only. All measurements are approximate are for general guidance purposes only and whilst every care has been taken to ensure their accuracy, they should not be relied upon and potential buyers are advised to recheck the measurements