



8 Ellery Street | London | SE15 3RL

£3,500 pcm

- Three double bedrooms
- South facing garden
- Available Autumn 2025
- Nunhead Station
- Victorian House
- Modern interior
- Peckham Rye Station
- Whitegoods included
- Furnished
- Close to local shops

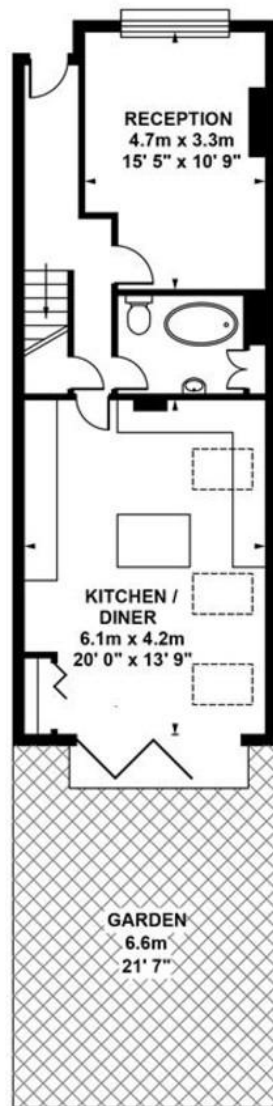


A charming three-bedroom two bathroom period property in a sought-after residential spot. A large open plan kitchen extension, sunny south-facing garden, and well-presented interiors throughout make this home ideal for families or professional sharers.

Located directly opposite Harold Moody Park, both Nunhead and Peckham Rye stations are within easy walking distance as well as numerous bus routes.

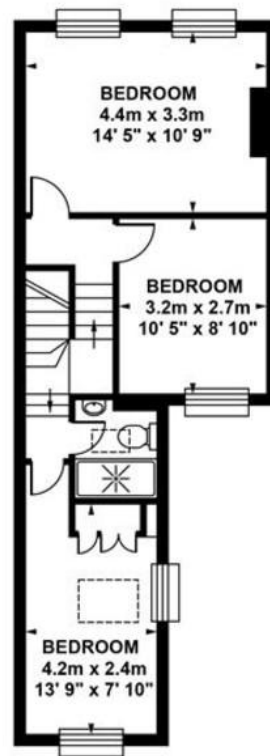


Score	Energy rating	Current	Potential
92+	A		
81-91	B		87 B
69-80	C	69 C	
55-68	D		
39-54	E		
21-38	F		
1-20	G		



GROUND FLOOR

Approximate. internal area :
55.66 sqm / 599 sq ft



FIRST FLOOR

Approximate. internal area :
43.87 sqm / 472 sq ft



TOTAL APPROX FLOOR AREA

Approximate. internal area : 99.53 sqm / 1071 sq ft

Measurements for guidance only / Not to scale

Viewing Arrangements

Strictly by appointment

Contact Details

121 Denmark Hill

London

SE5 8EN

www.urbanvillagehomes.co.uk

lettings@urbanvillagehomes.com

020 3519 9121

Agents Note: Whilst every care has been taken to prepare these sales particulars, they are for guidance purposes only. All measurements are approximate are for general guidance purposes only and whilst every care has been taken to ensure their accuracy, they should not be relied upon and potential buyers are advised to recheck the measurements