



## Redan Terrace | London | SE5

£3,100 pcm

- Three double bedrooms
- Private garden
- Separate Kitchen and Living
- Lots of storage
- Laundry room
- Brixton tube
- Local amenities
- Denmark Hill Station
- Excellent bus routes
- Kings College Hospital



Semi-detached three bedroom house with a large garden. Separate kitchen, reception and laundry room with plenty of storage.

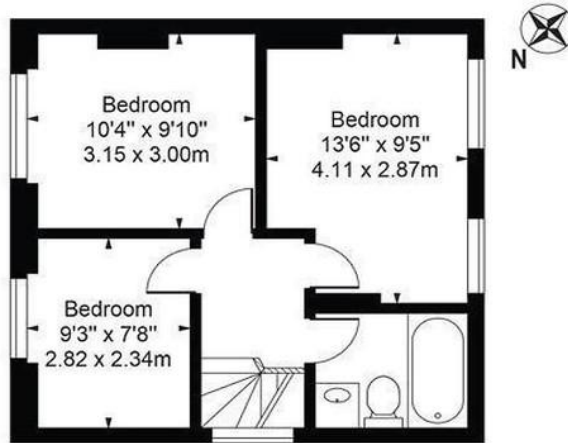
Upstairs, there are three double bedrooms and a family bathroom. Redan Terrace is a quiet cul-de-sac which sits on the edge of Camberwell, bordering Brixton. Brixton tube station, Loughborough Junction station, Herne Hill and Denmark Hill station are all within walking distance with services fast to central London hubs.



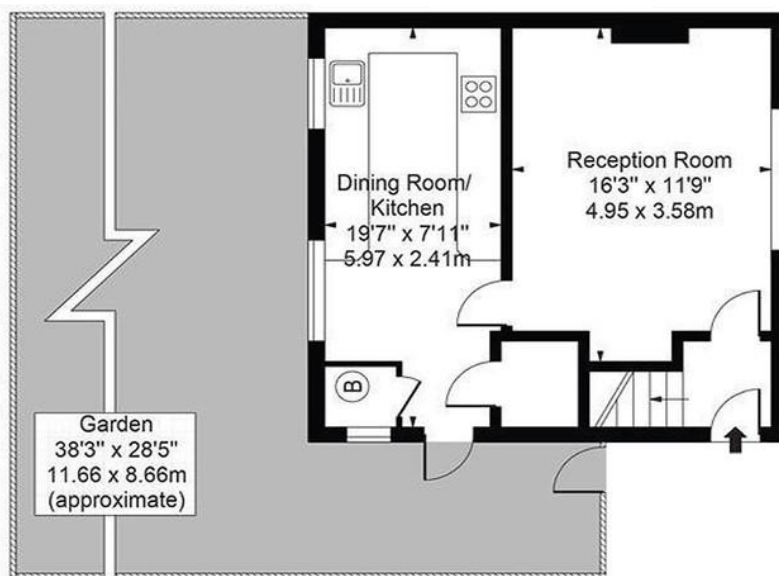
Score	Energy rating	Current	Potential
92+	A		
81-91	B		
69-80	C		79 C
55-68	D	66 D	
39-54	E		
21-38	F		
1-20	G		

# Redan Terrace, SE5 9DY

Approx. Gross Internal Area 797 Sq Ft - 74.04 Sq M



First Floor



Ground Floor

For Illustration Purposes Only - Not To Scale

This floor plan should be used as a general outline for guidance only and does not constitute in whole or in part an offer or contract. Intending purchaser or lessee should satisfy themselves by inspection, searches, enquiries and full survey as to the correctness of each statement. Any areas, measurements or distances quoted are approximate and should not be used to value a property or be the basis of any sale or let.

## Viewing Arrangements

Strictly by appointment

## Contact Details

121 Denmark Hill

London

SE5 8EN

[www.urbanvillagehomes.co.uk](http://www.urbanvillagehomes.co.uk)

[lettings@urbanvillagehomes.com](mailto:lettings@urbanvillagehomes.com)

020 3519 9121

Agents Note: Whilst every care has been taken to prepare these sales particulars, they are for guidance purposes only. All measurements are approximate and for general guidance purposes only and whilst every care has been taken to ensure their accuracy, they should not be relied upon and potential buyers are advised to recheck the measurements.